



Schoolwide Positive Behavior Plan (SPBP)
Broward County Public Schools



SY 2025 – 2026

School Name:	Silver Lakes Elementary School
School Number:	3371

Please refer to the SPBP Canvas Resource page to access video tutorials, guidance, and resources for completing the 2025-2026 SPBP template.

CRITICAL ELEMENT # 1: Active Team with Administrative Participation

1A. Integrated MTSS School-Leadership Team Members

Title	First and Last Name	Title	First and Last Name
1. Administrator	Lourdes Cruz	7. Security Specialist/ Campus Monitor	Elizabeth Domenech
2. Point of Contact	Jasmine Johnakin-Warthen	8. Social Worker	Marlene Jairam
3. BTU Representative	Roxana Llanes	9. School Nurse	Yvonne Emmanuel
4. Parent/Community Representative	Jeremy Scott	10. Attendance Manager	Lourdes Cruz/Marlene Jairam
5. Student Representative	N/A	11. Life Skills & Wellness Liaison	Jasmine Johnakin-Warthen
6. School Counselor	Jasmine Johnakin-Warthen	12. Resiliency Liaison	Jasmine Johnakin-Warthen

*Optional Team Member(s): Family Therapist, Grade Level/Content Area Representatives, Clerical, Custodial, Food/Nutrition

1B. Schedule of quarterly team meetings.

Meeting Objectives:

1. Progress monitor the action steps indicated in Critical Element #9.
2. Collect & analyze student outcome data using the 4 Step Problem Solving Process.

Quarter	PBIS Data Meeting Dates	PBIS Data Meeting Times		Faculty and Staff Data Communication/Presentation Dates
1 st	8/15/2025	8:15 A.M.		9/9/2025
2 nd	11/7/2025	8:15 A.M.		11/11/2025
3 rd	2/13/2026	8:15 A.M.		3/10/2026
4 th	4/10/2026	8:15 A.M.		4/14/2026

CRITICAL ELEMENT # 2: Faculty & Stakeholder Commitment

2. Team communication/presentation of new SPBP to staff and stakeholders

Action Steps:	Dates
Present the 2025-26 SPBP to staff (<i>prior to April 30, 2025</i>)	4/23/2025
Hold a <i>faculty</i> vote on the new SPBP (<i>prior to April 30, 2025</i>)	4/23/2025
Provide training to faculty and staff (<i>prior to September 30, 2025</i>)	8/11/2025
Present the 2025-26 SPBP to family and community stakeholders (<i>prior to September 30, 2025</i>)	9/22/2025

CRITICAL ELEMENT # 3: Data Collection and Analysis

3A. Core Effectiveness: Use current 2024-2025 school year behavior data as listed in Focus.

- (a) Review your referral data YTD in Focus – Discipline Reports – *Students with Referrals*.
- (b) Complete the yellow highlighted cells.
- (c) Auto-calculate the “% of Total Population” by clicking on each “!Zero Divide” in the cells and pressing “Fn + F9”.
- (d) Determine if the core is effective in all three areas.

TOTAL Population:	337	% of Total Population	Core Effectiveness	
# Referrals: 21	# of Students: 16			
I. 0 - 1 referrals	11	100%	Are your 0 – 1 referral > 80%?	<input checked="" type="checkbox"/> Yes <input type="checkbox"/> No
II. 2 - 5 referrals (at risk students)	5	2%	Are your 2 - 5 referrals <15%?	<input checked="" type="checkbox"/> Yes <input type="checkbox"/> No
III. > 5 referrals (high-risk students)	0	0%	Are your >5 referrals <5%?	<input checked="" type="checkbox"/> Yes <input type="checkbox"/> No

3B. Core Effectiveness Action Steps:

If you answered “Yes” to I, II, and III above, then your core is effective. Based upon table 8A, is your core effective?	<input checked="" type="checkbox"/> Yes <input type="checkbox"/> No
Answer either (a) or (b):	
(a) If your core is effective, then identify action steps your school leadership team should continue to take for early identification of at risk or high-risk students.	
(b) If you answered “No” to at least one of the items above (I, II, or III) then indicate the supports and interventions and action steps your school leadership team will implement <i>at the beginning</i> of the next school year to improve core strength:	
Core Effectiveness Action Steps: <i>(3-4 detailed steps)</i>	
1. The at-risk students will be referred to Rtl and benefit from a positive behavior plan (rewards are selected based on student interview and interest inventory).	
2. School Counselor will collaborate with stakeholders to help students with behavioral challenges. School Counselor will complete Lunch Bunch sittings, Counselor Classroom Lessons, Resiliency courses. This allows at-risk students and others to meet and discuss arising or presenting challenges with self or peers.	
3. The Life Skills and Wellness curriculum initiatives will be implemented to empower positive behavior expectations, on a monthly basis. There will be an emphasis during recognized weeks such as: Peace Week, Anti-Bully Week, Digital Citizenship Week, etc.	
4. There will be monthly BTA Team Meetings to include: Administration, School Psychologist, School Social Worker, School Counselor, and SRO.	

3C. Disproportionality is often measured with the relative risk statistic calculation (Relative Risk Ratio = RRR), a measure that indicates the probability of a certain event (e.g., referrals) for one subgroup when compared to all other subgroups.

Relative Risk Ratio calculations are coming soon with the Focus Data System migration.

3D. Disproportionality Action Steps:

What activities/initiatives/programs will your school leadership team implement to prevent disproportionate discipline outcomes within sub group populations (race, SWD, ELL)?

Disproportionality Action Steps: (3-4 detailed steps)

1. Ensure teachers have a positive reinforcement incentive program in the classroom to motivate students.
2. School Counselor will work collaboratively with all stakeholders to help students with behavioral challenges.
3. Classroom Teachers will be provided with a refresher on the areas of CHAMPS not being implemented and allow peer visits.

CRITICAL ELEMENT # 4: Schoolwide Expectations & Location-based Rules

4A. Top five behavior incidents: Use current 2024-2025 school year behavior data as listed in Focus.

- (a) Review your referral data YTD in Focus – Discipline – Category Breakdown – *Highest Discipline Code*.
- (b) Complete the chart by identifying the top five behavior incidents and the number of incidents for each type.
- (c) Complete the yellow highlighted cells.
- (d) Auto-calculate the total # of referrals by clicking on “0” and pressing “Fn + F9” together.

Top 5 Behavior Incidents Current Year 2024-2025	# Incidents
1. Unruly/Disruptive Behavior	14
2. Unsubstantiated Bullying	5
3. Fight Minor/Altercation/Confrontation	2
4.	
5.	
TOTAL	21

4B. School-wide expectations are 3 – 5 positive characteristics (*not behaviors*) that counteract the top school-wide misbehaviors in section 3A. ALL people on campus are expected to model these expectations.

Schoolwide Expectations
1. Be Respectful
2. Be Responsible
3. Be Kind
4.
5.

4C. Top three school-wide locations: Use current 2024-2025 school year behavior data as listed in Focus.

- (a) Review your referral data YTD in Focus – Discipline – Category Breakdown – *Location*.
- (b) Complete the chart by identifying the top three schoolwide locations, excluding classroom and the number of incidents for each location.

Top 3 Locations, <u>excluding Classroom</u>:	
School Location(s)	# Incidents
1. Cafeteria	5
2. Playground	3
3. Hallway	2

4D. Expectations and Rules Chart for common areas of school campus:
 This chart is posted in all classrooms and used to teach students during behavior lessons.

Schoolwide Expectations and Location-based Rules				Completed by each teacher:
Schoolwide EXPECTATIONS	Hallway Rules	Cafeteria Rules	Click here to enter location: Rules	Classroom Rules
Be Respectful	Use Level 1 voice in the hallways	Click here to select cafeteria rules OR Ask permission to get up from your table	Click here to select location rules OR Take turns using the playground equipment	Follow directions the first time given.
Be Responsible	Walk on the right side of the hallway	Click here to select cafeteria rules OR Pick up trash from the table and floor	Click here to select location rules OR Pick up trash and place in the trash cans located on the playground area	Have all materials in your assigned area.
Be Kind	Keep hands and feet to yourself	Click here to select cafeteria rules OR Line up quietly when you are dismissed	Click here to select location rules OR Use your manners to ask for play equipment (say “please” and “thank you”)	Keep hands and feet to yourself
Click here to type your Expectation	Click here to select hallway rules OR Click here to type hallway rules.	Click here to select cafeteria rules OR Click here to type cafeteria rules.	Click here to select location rules OR Click here to type location rules.	
Click here to type your Expectation	Click here to select hallway rules OR Click here to type hallway rules.	Click here to select cafeteria rules OR Click here to type cafeteria rules.	Click here to select location rules OR Click here to type location rules.	

CRITICAL ELEMENT #5: Teaching Behavior

5A. At least one lesson plan for **each** schoolwide expectation above is distributed to instructional staff during pre-planning week and are maintained in the SPBP Binder.

Dates when the schoolwide expectations lesson plans are taught by instructional staff and noted in lesson plans:			
	Date(s)	Time:	Location(s):
Start of School Year	8/11/2025	8:00 A.M.	Classrooms
After Winter Break	1/6/2026	8:00 A.M.	Classrooms
After Spring Break	3/23/2026	8:00 A.M.	Classrooms

5B. At least one Rules Lesson Plan for **each** common location is distributed to instructional staff during pre-planning. This is aligned to the **Schoolwide Expectation/Location-based Rules** chart in section 4D. Location-based rules should be taught and reinforced in the context of the location in the beginning of the year, after long breaks, and throughout the year as necessary.

Dates when the rules lesson plans for common locations are taught by instructional staff and noted in lesson plans:			
Common Location	Hallway Rules	Cafeteria Rules	Select location
Lesson Plan Dates			
Start of School Year	8/11/2025	8/11/2025	8/11/2025
After Winter Break	1/6/2026	1/6/2026	1/6/2026
After Spring Break	3/23/2026	3/23/2026	3/23/2026

5C. Prevention programs and other schoolwide student support initiatives can be used to proactively teach positive behavior and prosocial skills. Use this chart to plan for how you will use District supported programs and initiatives to promote positive behavior on campus.

Program/Initiative	Plan Details			
	When will it be taught?	Who will teach it?	How will it be implemented? <i>2-3 sentences</i>	How will it be monitored for effectiveness?
Bullying Prevention: Be the 1	After Winter Break	Equity, Diversity, and School Climate Department	Equity Liaison will collaborate with the Equity Department to plan a date. There will collaborate with Administration on easiest and effective delivery. The date of event will be communicated with teachers.	There will be follow-up conducted with the School Counselor to answer questions and provide clarity.
Internet Safety: Think B4U Post	Start of School	Equity, Diversity, and School Climate Department	Equity Liaison will collaborate with the Equity Department to plan a date. There will collaborate with Administration on easiest and effective delivery. The date of event will be communicated with teachers.	There will be follow-up conducted with the School Counselor to answer questions and provide clarity.

CRITICAL ELEMENT # 6: Recognition Programs

6A. The schoolwide recognition system focuses on reinforcing schoolwide expectations OR a specific location where referrals often occur. The recognition should be used to encourage, acknowledge, and reinforce students to exhibit positive behaviors.

Identified Schoolwide Expectation OR Specific Location: [Click here to enter Expectation OR Location](#)

4 Step Problem Solving Process	Plan Details
<p>1. Problem Identification: Review your behavior data to identify one schoolwide problem. What problem did you identify? <i>(use numerical data)</i></p>	<p>Data used: FOCUS/Behavior Dashboard/Cafeteria School-Wide Behavior Plan</p> <p>Problem Identification Statement: Students are not demonstrating appropriate behaviors at lunch. Some students are getting out of their seats without permission and demonstrating inappropriate behaviors. Under Category Breakdown in FOCUS, for the 2024-2025 school year, and there is a total of 5 incidences that occurred in the cafeteria.</p>
<p>2. Problem Analysis: Why do you think this problem is occurring? What is your goal? <i>(create a SMART goal statement with numerical data)</i></p>	<p>Hypothesis: <i>Clearer expectations should be communicated to students, teachers, office personnel to minimize the number of students getting out of their seats during lunch without permission and minimize the number of students using inappropriate behaviors such as not using kind words with their peers.</i></p> <p>SMART Goal Statement: By October 2025, students, teachers, officer personnel and staff will become familiar with cafeteria rules and behavioral expectations and will reduce the number of times and students get up without permission and reduce the number of times they demonstrate inappropriate behaviors by 20%.</p>
<p>3. Intervention Design: Describe how you will implement a positive reward program/system to decrease this problem.</p>	<p>Type of Program/System: Economic simulation system</p> <p>Description of Program/System: Classes will earn a dollar when they follow specific cafeteria expectations and rules each day. Students will be able to “buy” a reward from a given menu after accumulating a certain amount of dollars earned. Reward options will be based on student interest. CHAMPS will be posted and implemented in the cafeteria by faculty and staff for students to monitor their own behaviors.</p>
<p>4. Evaluation: A. Implementation fidelity</p>	<p>How will you monitor the fidelity (consistency and effectiveness) of the <u>staff's</u> implementation of the reward program/system? <i>(2-3 sentences)</i></p> <ol style="list-style-type: none"> All faculty and staff are trained at the beginning of the year regarding cafeteria rules and expectations. Monthly meeting will faculty and staff to monitor cafeteria behavior and monitor grade level class behavior in the other locations. Communication during Team Leader Meetings regarding cafeteria behavior and grade level concerns. Monitoring behavior data reports on FOCUS (Discipline Dashboard). Tracking system in place to monitor class success.
<p>B. Student outcome monitoring <i>(use numerical data)</i></p>	<p>How will you know if the reward program/system is positively impacting students? What measurable data will you use to determine “success”? <i>(2-3 sentences)</i></p> <p>Progress monitoring data will include name of teachers/classes who earned dollars towards a class selected reward. The goal is for each class to earn a party at least once a month. Classes who do not earn rewards will be addressed individually to identify barriers to success.</p>

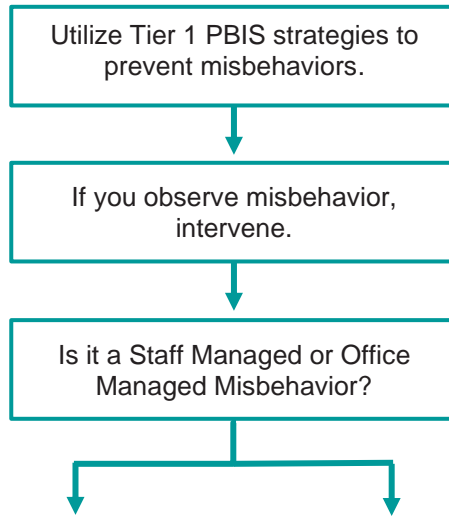
6B. *Character Education* is an educational and award program utilized to teach and recognize students who display positive character traits each month. Please refer to the BCPS website for lesson plans, videos and additional resources to support this recognition program at your school.



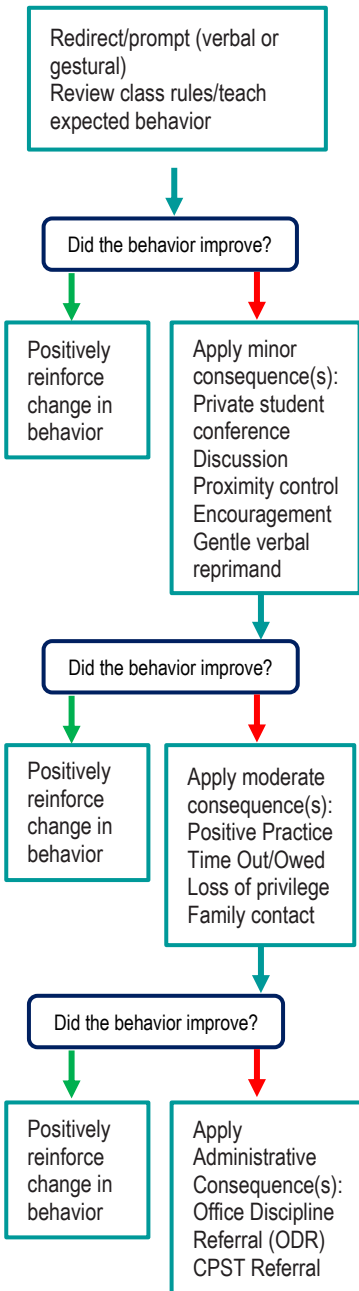
Monthly Character Traits	Plan Details
<ol style="list-style-type: none"> September: Cooperation October: Responsibility November: Citizenship December: Kindness January: Respect February: Honesty March: Self-Control April: Tolerance 	<p>How will you recognize <i>Kids of Character</i> each month? <i>(2-3 sentences)</i></p> <p>Monthly, students will be advised of the Character Trait through morning announcements. The teacher will monitor students' behaviors throughout the month. There will be an announcement for students that have been chosen – who demonstrated the character trait. The students will receive positive incentive.</p>

CRITICAL ELEMENT #7: Effective Discipline Procedures

You can choose to use the flow chart below or create your own. This flow chart is posted in all classrooms and used to teach students during behavior lessons.



- Tier 1 Strategies include, but are not limited to:
- Effective classroom structure
 - Precorrection
 - Preferential seating/seat change
 - Remove distractions
 - Personal schedule/organization
 - Reteach expectations and rules
 - Redirection
 - Prompts, cues, and reminders
 - Think time/cool down area
 - Consistent reward system
 - Modify academic assignments
 - Provide choices



Staff Managed Misbehaviors	Office Managed Misbehaviors
Note: The behaviors provided are examples, not an exhausted list of misbehaviors.	
Inappropriate language <ul style="list-style-type: none"> name calling use of profanity 	Inappropriate language <ul style="list-style-type: none"> racial slurs or taunting profanity directed at a staff member
Disrespect <ul style="list-style-type: none"> talking back physical gestures 	Harassment <ul style="list-style-type: none"> bullying threat or intimidation
Defiance <ul style="list-style-type: none"> work refusal head down on desk/sleeping not following directions 	Defiance <ul style="list-style-type: none"> leaving classroom, assigned area, or school grounds without permission forgery/plagiarism
Disruptive <ul style="list-style-type: none"> tattling/false information talking out of turn calling out distracting others 	Disruptive <ul style="list-style-type: none"> inciting others to disrupt teacher chronic classroom disruption: more than 3 times within 30 minutes
Physical Contact <ul style="list-style-type: none"> touching others, pushing/shoving (no injuries) mutual horseplay 	Physical Contact <ul style="list-style-type: none"> touching others (hitting, kicking, biting) with intent to do harm petty theft
Violation of classroom or location-specific rules	Violation of the Code of Student Conduct

Staff:
Submit an office discipline referral (ODR) using report style writing (non-judgmental, observable, and measurable language)

Administrator:
Review, investigate and apply consequence according to policy
Contact family to communicate incident and consequence
Follow up with teacher/feedback/support




Crisis Events:
In need of immediate assistance
Potentially unsafe environment
Suspicion of criminal behavior
Contact front office/administration immediately
Follow safety team protocol

CRITICAL ELEMENT # 8: Classroom Management Systems

8A. Evidence-based Tier 1 classroom management system:

Which evidence-based system(s) are you using?	Provide 3-4 measurable and observable action steps the team will take to help educators improve their classroom management system. <i>(3-4 detailed steps)</i>
<input checked="" type="checkbox"/> CHAMPS <input type="checkbox"/> Positive Behavior Interventions and Supports and the Classroom https://fl-pda.org/#/category/26 <input type="checkbox"/> Other: Click here to enter name of system.	<ol style="list-style-type: none"> 1. Conduct classroom walk-throughs using CHAMPS 7 Up Checklist to determine which modules teachers would need a refresher to fully implement all aspects of CHAMPS. 2. Provide the classroom teachers with a refresher for the areas of CHAMPS not being implemented and allow peer visits. 3. Consult with PBIS Specialist for teachers that continue to have difficulty with CHAMPS implementation.

8B. The administration reviews and analyzes the fidelity of staff implementation of Tier 1 classroom management systems **across teachers** using:

<input checked="" type="checkbox"/> CHAMPS 7 Up Checklist 
<input type="checkbox"/> Classroom Snapshot (Classroom Management Assessment) 
<input type="checkbox"/> PBIS Classroom Assistance Tool (CAT) 
<input type="checkbox"/> Other (<i>specify</i>):

8C. Percentage of classroom referrals: **Use current 2024-2025 school year behavior data** as listed in Focus.

(a) Review your classroom data YTD in Focus – Discipline – Category Breakdown – Location.

(b) Complete the yellow highlighted cells.

(c) Auto-calculate the % of referrals in the classroom by clicking on “!Zero Divide” in the next cell and pressing “Fn + F9” together.

Total number of discipline referrals from classrooms :	8
Total number of <i>other</i> school-wide discipline referrals (not including classrooms):	13
% of referrals in the classroom:	38%
Do more than 40% of your referrals come from the classroom?	<input type="checkbox"/> Yes <input checked="" type="checkbox"/> No

If >40% of discipline referrals come from the classroom, it suggests Tier 1 classroom management implementation may need to be strengthened school wide.

Critical Elements # 9: SPBP Implementation Planning

RED Font = Action Steps for all schools in Broward County

GREY Font = Best Practices for all schools in Broward County

TEAL Font = Resources available at <https://browardschools.instructure.com/enroll/PWF673>

Implementation Action Plan	
Month	Action Steps
	<input checked="" type="checkbox"/> check off Action Step when completed
Current	<input checked="" type="checkbox"/> Create an SPBP binder or portfolio to retain (for 2 years) hard copies of: your SPBPs, Action Plans, staff PBIS professional development attendance, stakeholder training attendance, quarterly meeting agendas, quarterly staff behavior presentations, voting attendance and outcome, Expectations lesson plans and Rules lesson plans
Pre-Planning	<input checked="" type="checkbox"/> Print up your SPBP and Feedback form BCPS Central <input type="checkbox"/> Provide SPBP presentation to all staff during Pre-Planning <input type="checkbox"/> Disseminate the current SPBP (hard copy or electronically) to all staff and stakeholders <input type="checkbox"/> Market and post School-wide Expectations and Location-specific Rules <input type="checkbox"/> Identify your district PBIS Specialist (Contact amber.jennings@browardschools.com for more information if you are unsure) <input type="checkbox"/> Ensure schedule of quarterly meeting dates for entire year as indicated in the SPBP (indicated in yellow)
August 1 st Quarter Team Meeting	<input type="checkbox"/> Determine any needed team training, such as: 4 Step Problem Solving Process series, PBIS 10 Critical Elements, Data Collection, etc. <input type="checkbox"/> Review previous year's SPBP and feedback form; make necessary modifications <input type="checkbox"/> Review previous year's data (Use Tier 1 Agenda and Quarter Big 5 Data template on PBIS Canvas page) <input type="checkbox"/> Verify and implement teaching schedule for Expectations and Rules behavior lesson plans <input type="checkbox"/> Implement the Reward System for all students as indicated in the SPBP <input type="checkbox"/> Ensure the Discipline Flow Chart is distributed to all staff and is being used as written <input type="checkbox"/> Present implementation data, behavior data, team activities and SPBP progress to entire staff <input type="checkbox"/> Ensure all teachers are using an evidence-based classroom management plan, such as CHAMPS <input type="checkbox"/> Confirm next quarterly PBIS team meeting date and time
September	<input type="checkbox"/> Provide SPBP stakeholder presentation by September 30 th <input type="checkbox"/> Ensure instructional staff know how to document Tier 1 Supplemental Strategies for behavior <input type="checkbox"/> Check for staff and teacher understanding of PBIS - provide "PBIS 101" training as a resource Brainshark available at: http://www.brainshark.com/browardschools/PBIS101
October 2 nd Quarter Team Meeting	<input type="checkbox"/> Review previous quarter's data. (Use Tier 1 Agenda and Quarter Big 5 Data template on PBIS Canvas page) <input type="checkbox"/> Present implementation data, behavior data, team activities, and SPBP progress to entire staff <input type="checkbox"/> Ensure Core Effectiveness Action Steps are being implemented as written <input type="checkbox"/> Complete Quarterly Big 5 Data Template and submit to your PBIS Administrator <input type="checkbox"/> Confirm next quarterly PBIS team meeting date and time
November	<input type="checkbox"/> Review/revise lesson plans as indicated by previous quarter behavior data <input type="checkbox"/> Ensure that the Student Outcome Monitoring Action Steps are being implemented as written
January 3 rd Quarter Team Meeting	<input type="checkbox"/> Staff to re-teach Expectations and Rules after winter break <input type="checkbox"/> Review previous quarter's data. (Use Tier 1 Agenda and Quarter Big 5 Data template on PBIS Canvas page) <input type="checkbox"/> Present implementation data, behavior data, team activities, and SPBP progress to entire staff <input type="checkbox"/> Complete Quarterly Big 5 Data Template and submit to your PBIS Administrator <input type="checkbox"/> Confirm next quarterly PBIS team meeting date and time
February	<input type="checkbox"/> Check on recently hired staff for PBIS understanding - provide "PBIS 101" Brainshark resource <input type="checkbox"/> Utilize the Stakeholder SPBP Forms Survey to solicit input for planning next year's SPBP (optional)
March 4 th Quarter Team Meeting	<input type="checkbox"/> Ensure progress towards completion and submission of next year's SPBP <input type="checkbox"/> Staff to re-teach Expectations and Rules after spring break <input type="checkbox"/> Review previous quarter's data. (Use Tier 1 Agenda and Quarter Big 5 Data template on PBIS Canvas page) <input type="checkbox"/> Present implementation data, behavior data, team activities, and SPBP progress to entire staff <input type="checkbox"/> Complete Quarterly Big 5 Data Template and submit to your PBIS Administrator
April	<input type="checkbox"/> Provide staff presentation and faculty vote on new SPBP for next year <input type="checkbox"/> Submit your SPBP in BCPS Central by April 30 th . Use this new SPBP in the next school year <input type="checkbox"/> Continue implementing your current SPBP through the end of the current school year

CRITICAL ELEMENT # 10: Evaluation

10A. Staff Implementation of the Schoolwide Positive Behavior Plan: review goals, evaluate implementation, and create 2 action steps to review in quarterly PBIS meetings.

“Are staff implementing the SPBP with fidelity? If not, how will you address this area?”

STAFF Implementation Monitoring		
Staff Implementation Goal	Quarterly Team Review: Implemented with fidelity?	If you answered No , enter 2 action steps your school will take to move towards this goal by the next PBIS meeting.
100% of hallways, front office, cafeteria, and other public areas all have school-wide expectations and location-specific rules posted.	<input checked="" type="checkbox"/> Yes <input type="checkbox"/> No	By Click here to enter a date, 1. 2.
100% of instructional staff has delivered expectations and rules lesson plans as written and when indicated.	<input checked="" type="checkbox"/> Yes <input type="checkbox"/> No	By Click here to enter a date, 1. 2.
100% of staff members are oriented to the Discipline Flow Chart. It is used consistently by 100% instructional staff, behavioral support, and administrators.	<input checked="" type="checkbox"/> Yes <input type="checkbox"/> No	By Click here to enter a date, 1. 2.
A recognition system is implemented by 100% staff for <i>all</i> students.	<input checked="" type="checkbox"/> Yes <input type="checkbox"/> No	By Click here to enter a date, 1. 2.


10B. The SPBP is successful in positively impacting **students**: review behavior data and create a SMART goal. Evaluate implementation and create action steps to review in quarterly PBIS meeting.

“If staff are implementing the SPBP consistently and effectively, is it positively impacting students? How will you know?”

SMART Criteria:

S	Specific	Concrete, detailed, focused, and well defined. Results-focused and action-orientated.
M	Measurable	The measurement sources (data) are defined numerically in order to track progress towards the objective.
A	Attainable	Objectives are achievable in the near future to maintain motivation.
R	Realistic	Staff have the resources to achieve the objective- time, personnel, materials, etc.
T	Time-bound	Agreed-on time frames create the necessary urgency and prompt action.

STUDENT Outcome Monitoring		
Student Outcome Data	Complete the SMART goal to determine “successful” student outcomes <i>(use numerical data)</i>	List 2 action steps your team will take to ensure this goal is monitored and meets or exceeds the SMART goal.
Select an item Behavior Incidents	By June 3, 2026, the number of unruly/disruptive behavior incidents as indicated by the PBIS will reduce from 14 incidents to 10 incidents as measured by Office Discipline Referrals (ODRs) in Focus.	1. Implementation school-wide reward system to reinforce positive behavior. 2. Increase teaching of students expressing how they feel instead of demonstrating unruly/disruptive behavior.

SPBP Submission
<ol style="list-style-type: none"> 1. Upload completed SPBP (as PDF) into BCPS Central in the School Improvement Plan.  2. Complete PBIS Point of Contact form. 