



Schoolwide Positive Behavior Plan (SPBP)
Broward County Public Schools



SY 2025 – 2026

School Name:	North Lauderdale Elementary School
School Number:	2231

Please refer to the SPBP Canvas Resource page to access video tutorials, guidance, and resources for completing the 2025-2026 SPBP template.

CRITICAL ELEMENT # 1: Active Team with Administrative Participation

1A. Integrated MTSS School-Leadership Team Members

Title	First and Last Name	Title	First and Last Name
1. Administrator	Nicole Ortega	7. Security Specialist/ Campus Monitor	Marvin Major
2. Point of Contact	Chedline Alincy	8. Social Worker	Lisa Noflin
3. BTU Representative	Tamela Williams	9. Grade Level/Content Area Representatives	Lourdneyn Joseph
4. Parent/Community Representative	Teron Richards	10. Attendance Manager	Sammy Rivera
5. Custodial	Jimmy Bostic	11. Clerical	Natalie Stinfil
6. School Counselor	Joanna Jules	12. Team Leader	Amanda Branch

*Optional Team Member(s): Family Therapist, Grade Level/Content Area Representatives, Clerical, Custodial, Food/Nutrition

1B. Schedule of quarterly team meetings.

Meeting Objectives:

1. Progress monitor the action steps indicated in Critical Element #9.
2. Collect & analyze student outcome data using the 4 Step Problem Solving Process.

Quarter	PBIS Data Meeting Dates	PBIS Data Meeting Times		Faculty and Staff Data Communication/Presentation Dates
1 st	10/7/2025	2:15pm		10/9/2025
2 nd	12/16/2025	2:15pm		12/18/2025
3 rd	3/10/2026	2:15pm		3/12/2026
4 th	5/19/2026	2:15pm		5/21/2026

CRITICAL ELEMENT # 2: Faculty & Stakeholder Commitment

2. Team communication/presentation of new SPBP to staff and stakeholders

Action Steps:	Dates
Present the 2025-26 SPBP to staff (<i>prior to April 30, 2025</i>)	4/15/2025
Hold a <i>faculty</i> vote on the new SPBP (<i>prior to April 30, 2025</i>)	4/17/2025
Provide training to faculty and staff (<i>prior to September 30, 2025</i>)	8/7/2025
Present the 2025-26 SPBP to family and community stakeholders (<i>prior to September 30, 2025</i>)	9/3/2025

CRITICAL ELEMENT # 3: Data Collection and Analysis

3A. Core Effectiveness: Use current 2024-2025 school year behavior data as listed in Focus.

- (a) Review your referral data YTD in Focus – Discipline Reports – *Students with Referrals*.
- (b) Complete the yellow highlighted cells.
- (c) Auto-calculate the “% of Total Population” by clicking on each “!Zero Divide” in the cells and pressing “Fn + F9”.
- (d) Determine if the core is effective in all three areas.

TOTAL Population:	661	% of Total Population	Core Effectiveness	
# Referrals:	# of Students:			
I. 0 - 1 referrals		!Zero Divide	Are your 0 – 1 referral > 80%?	<input checked="" type="checkbox"/> Yes <input type="checkbox"/> No
II. 2 - 5 referrals (at risk students)		!Zero Divide	Are your 2 - 5 referrals <15%?	<input checked="" type="checkbox"/> Yes <input type="checkbox"/> No
III. > 5 referrals (high-risk students)	0	!Zero Divide	Are your >5 referrals <5%?	<input checked="" type="checkbox"/> Yes <input type="checkbox"/> No

3B. Core Effectiveness Action Steps:

If you answered “Yes” to I, II, and III above, then your core is effective. Based upon table 8A, is your core effective?	<input checked="" type="checkbox"/> Yes <input type="checkbox"/> No
<p>Answer either (a) or (b):</p> <p>(a) If your core is effective, then identify action steps your school leadership team should continue to take for early identification of at risk or high-risk students.</p> <p>(b) If you answered “No” to at least one of the items above (I, II, or III) then indicate the supports and interventions and action steps your school leadership team will implement <i>at the beginning</i> of the next school year to improve core strength:</p> <p>Core Effectiveness Action Steps: <i>(3-4 detailed steps)</i></p> <ol style="list-style-type: none"> 1. Weekly MTSS Meeting to identify students who need additional support 2. Recognition of student based on the LION characteristics 3. Beginning of the year school-wide lesson plans and interventions 4. 	

3C. Disproportionality is often measured with the relative risk statistic calculation (Relative Risk Ratio = RRR), a measure that indicates the probability of a certain event (e.g., referrals) for one subgroup when compared to all other subgroups.

Relative Risk Ratio calculations are coming soon with the Focus Data System migration.

3D. Disproportionality Action Steps:

What activities/initiatives/programs will your school leadership team implement to prevent disproportionate discipline outcomes within sub group populations (race, SWD, ELL)?	
<p>Disproportionality Action Steps: <i>(3-4 detailed steps)</i></p> <ol style="list-style-type: none"> 1. Implicit Bias & Cultural Responsiveness Training: Regular PD for all staff to build awareness of cultural norms, communication styles, and how bias can influence discipline decisions. 2. Data Monitoring Systems: Regularly disaggregate discipline data by race, SWD, and ELL status to identify patterns and intervene early. 3. Family Partnership Programs: Engage families of SWD, ELL, and racially diverse students in decision-making and provide interpreters/translation when needed. 4. 	

CRITICAL ELEMENT # 4: Schoolwide Expectations & Location-based Rules

- 4A.** Top five behavior incidents: Use current 2024-2025 school year behavior data as listed in Focus.
- (a) Review your referral data YTD in Focus – Discipline – Category Breakdown – *Highest Discipline Code*.
 - (b) Complete the chart by identifying the top five behavior incidents and the number of incidents for each type.
 - (c) Complete the yellow highlighted cells.
 - (d) Auto-calculate the total # of referrals by clicking on “0” and pressing “Fn + F9” together.

Top 5 Behavior Incidents Current Year 2024-2025	# Incidents
1.	
2.	
3.	
4.	
5.	
TOTAL	0

4B. School-wide expectations are 3 – 5 positive characteristics (*not behaviors*) that counteract the top school-wide misbehaviors in section 3A. ALL people on campus are expected to model these expectations.

Schoolwide Expectations
1. Respectful
2. On Task
3. Accountable
4. Responsible
5. Safe

- 4C.** Top three school-wide locations: Use current 2024-2025 school year behavior data as listed in Focus.
- (a) Review your referral data YTD in Focus – Discipline – Category Breakdown – *Location*.
 - (b) Complete the chart by identifying the top three schoolwide locations, excluding classroom and the number of incidents for each location.

Top 3 Locations, excluding Classroom:	
School Location(s)	# Incidents
1.	
2.	
3.	

4D. Expectations and Rules Chart for common areas of school campus:
 This chart is posted in all classrooms and used to teach students during behavior lessons.

Schoolwide Expectations and Location-based Rules				Completed by each teacher:
Schoolwide EXPECTATIONS	Hallway Rules	Cafeteria Rules	Click here to enter location: Rules	Classroom Rules
Respectful	Use Level 1 voice in the hallways Click here to type hallway rules.	Clean your eating space and pick up trash around your area Click here to type cafeteria rules.	Keep hands and feet to yourself Click here to type location rules.	
On Task	Remain in your line Click here to type hallway rules.	Face one direction when seated Click here to type cafeteria rules.	Stay in designated area Click here to type location rules.	
Accountable	Go directly to your destination Click here to type hallway rules.	Keep all food items on your tray Click here to type cafeteria rules.	Wear your ID badge Click here to type location rules.	
Responsible	Have a pass when you are not with your class Click here to type hallway rules.	Clean your eating space and pick up trash around your area Click here to type cafeteria rules.	Follow directions the first time given Click here to type location rules.	
Safe	Face forward Click here to type hallway rules.	Follow all directions given by the cafe monitors/adults Click here to type cafeteria rules.	Practice social distancing Click here to type location rules.	

CRITICAL ELEMENT #5: Teaching Behavior

5A. At least one lesson plan for **each** schoolwide expectation above is distributed to instructional staff during pre-planning week and are maintained in the SPBP Binder.

Dates when the schoolwide expectations lesson plans are taught by instructional staff and noted in lesson plans:			
	Date(s)	Time:	Location(s):
Start of School Year	8/11/2025	8:00am	Classrooms
After Winter Break	1/6/2026	8:00am	Classrooms
After Spring Break	3/23/2026	8:00am	Classrooms

5B. At least one Rules Lesson Plan for **each** common location is distributed to instructional staff during pre-planning. This is aligned to the **Schoolwide Expectation/Location-based Rules** chart in section 4D. Location-based rules should be taught and reinforced in the context of the location in the beginning of the year, after long breaks, and throughout the year as necessary.

Dates when the rules lesson plans for common locations are taught by instructional staff and noted in lesson plans:			
Common Location	Hallway Rules	Cafeteria Rules	Select location
Lesson Plan Dates			
Start of School Year	8/11/2025	8/12/2025	8/13/2025
After Winter Break	1/6/2026	1/7/2026	1/8/2026
After Spring Break	3/23/2026	3/24/2026	3/25/2026

5C. Prevention programs and other schoolwide student support initiatives can be used to proactively teach positive behavior and prosocial skills. Use this chart to plan for how you will use District supported programs and initiatives to promote positive behavior on campus.


Program/Initiative	Plan Details			
	When will it be taught?	Who will teach it?	How will it be implemented? <i>2-3 sentences</i>	How will it be monitored for effectiveness?
Character Education Click to enter "other"	MTSS Instructional Block	Classroom Teachers	Celebrating Positive Behavior: Each month, the leadership team will recognize students who consistently demonstrate schoolwide expectations (e.g., respect, responsibility, perseverance).	Keep logs of nominations and recognitions to ensure all grade levels and demographics are consistently included.
Select a program Click to enter "other"				

CRITICAL ELEMENT # 6: Recognition Programs

6A. The schoolwide recognition system focuses on reinforcing schoolwide expectations OR a specific location where referrals often occur. The recognition should be used to encourage, acknowledge, and reinforce students to exhibit positive behaviors.

Identified Schoolwide Expectation OR Specific Location: [Click here to enter Expectation OR Location](#)

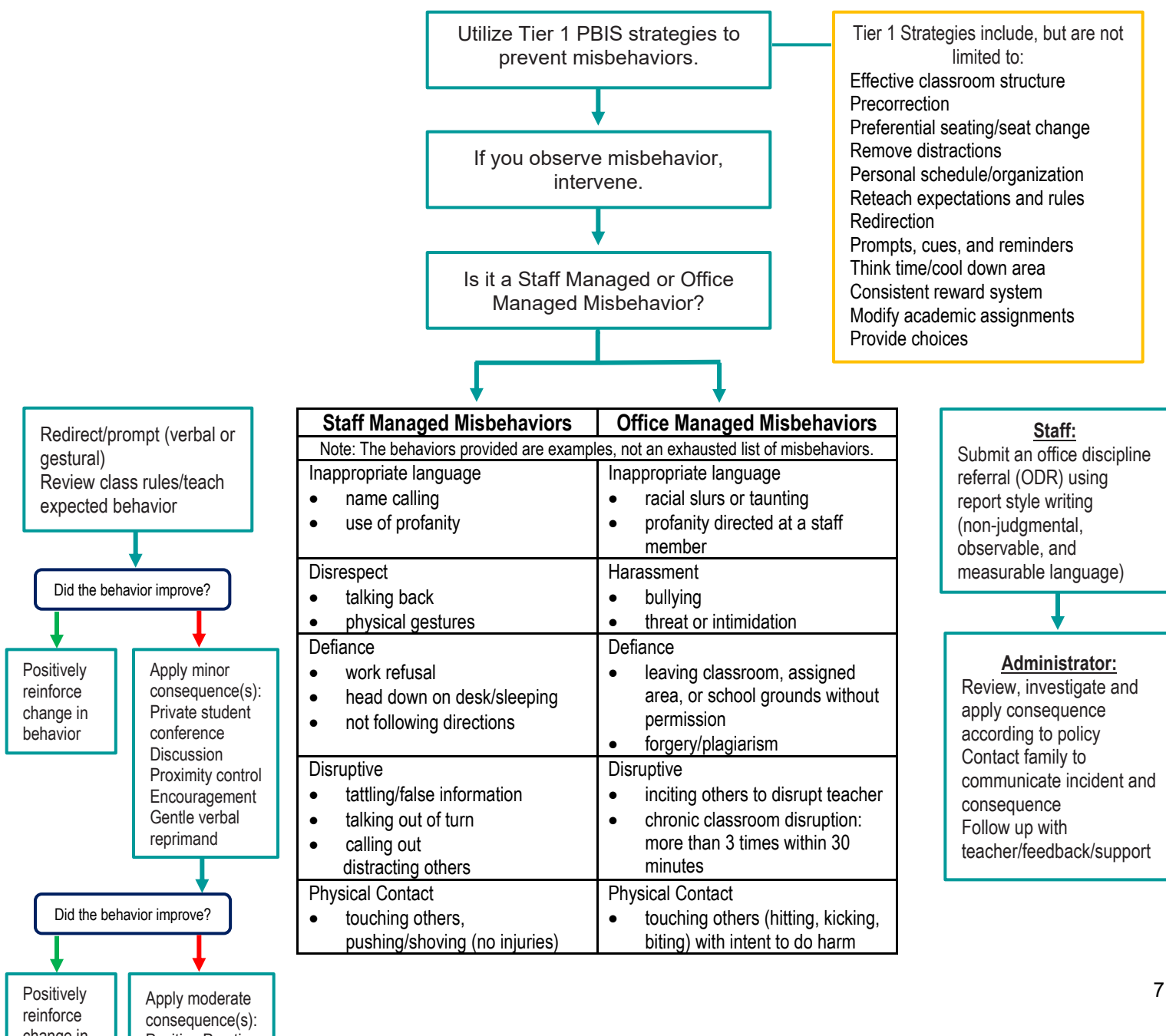
4 Step Problem Solving Process	Plan Details
<p>1. Problem Identification: Review your behavior data to identify one school-wide problem. What problem did you identify? <i>(use numerical data)</i></p>	<p>Data used: BASIS Behavior Dashboard and Daily Observations</p> <p>Problem Identification Statement: After reviewing the Behavior Dashboard, excluding the classrooms, it has been determined and validated 18 of the ODRs processed, were from incidents that occurred in the cafeteria and hallway <i>What problem did you identify?</i></p>
<p>2. Problem Analysis: Why do you think this problem is occurring? What is your goal? <i>(create a SMART goal statement with numerical data)</i></p>	<p>Hypothesis: The hallway and cafeteria are considered a non-classroom setting. These settings (e.g., cafeteria, restroom, hallway) can present exceptional challenges for teachers. The focus of these settings is typically non-academic and students are unsure if expectations apply.</p> <p>SMART Goal Statement: To reduce the amount of incidents that occur in the hallway and cafeteria, school personnel will implement the use of R.O.A.R.S. Buck Reward System. The reward system will allow students to earn R.O.A.R.S. bucks for using a level 1 voice in the hallways and cafeteria, remaining in line and facing forward. In addition, when traveling independently, students will be rewarded with R.O.A.R.S. bucks for having a hallway pass as well as going directly to their final destination. All staff responsible for transitions will implement this behavior plan while monitoring students within the hallways. In doing this, by the end of 4th quarter, North Lauderdale Elementary will decrease the number of hallway incidents by 50% as identified by the number of ODRs received and processed through BASIS.</p>
<p>3. Intervention Design: Describe how you will implement a positive reward program/system to decrease this problem.</p>	<p>Type of Program/System: Token system</p> <p>Description of Program/System: Students will be rewarded with R.O.A.R.S. Bucks when displaying the desired and observable behaviors throughout the hallways. Those behaviors are outlined above. And are listed below.</p> <ul style="list-style-type: none"> (a) Using Level 1 voice in the hallways/cafeteria (b) Remaining in line & staying seated (c) Going directly to the specified destination (d) Having a pass when not with the class (e) Facing forward while in the line <p>All school personnel will be provided with adequate amounts of R.O.A.R.S. Bucks to continue to reward positive behaviors. The bucks will be used to purchase items from the R.O.A.R.S. Store. Class challenges will also be incorporated to recognize those classes found to be following the expectations during hallway transitions</p>
<p>4. Evaluation: A. Implementation fidelity</p>	<p>How will you monitor the fidelity (consistency and effectiveness) of the staff's implementation of the reward program/system? The fidelity of the staff's implementation of the intervention design will be monitored through the usage of R.O.A.R.S. Bucks being placed back into circulation by grade level through the purchases of items from the R.O.A.R.S. Store. To determine the effectiveness of the intervention design, administration will monitor the number of ODRs for all incidents. With the focus on the selected location excluding classroom with the highest number of incidents (the hallway & cafeteria).</p>
<p>B. Student outcome monitoring <i>(use numerical data)</i></p>	<p>How will you know if the reward program/system is positively impacting students? What measurable data will you use to determine "success"? To indicate success and a positive impact of the implementation of the reward program/system, we as the SPBP Committee will interview random students and teachers from various grade levels to provide feedback on the rewards as well as the program. We as the SPBP Committee will also conduct learning walks throughout the school to ensure all expectation posters are displayed and being referred to often. Moreover, BASIS Behavior Dashboard ODRS will be the measurable data that will be used to monitor student outcome.</p>

6B. Character Education is an educational and award program utilized to teach and recognize students who display positive character traits each month. Please refer to the BCPS website for lesson plans, videos and additional resources to support this recognition program at your school. 

Monthly Character Traits	Plan Details How will you recognize <i>Kids of Character</i> each month? (2-3 sentences)
1. September: Cooperation 2. October: Responsibility 3. November: Citizenship 4. December: Kindness 5. January: Respect 6. February: Honesty 7. March: Self-Control 8. April: Tolerance	Each month a trait is highlighted, students learn about it through lessons or activities, and those who consistently demonstrate it are recognized—often with certificates, assemblies, or special awards.

CRITICAL ELEMENT #7: Effective Discipline Procedures

You can choose to use the flow chart below or create your own. This flow chart is posted in all classrooms and used to teach students during behavior lessons.








<ul style="list-style-type: none">• mutual horseplay	<ul style="list-style-type: none">• petty theft
Violation of classroom or location-specific rules	Violation of the Code of Student Conduct

CRITICAL ELEMENT # 8: Classroom Management Systems

8A. Evidence-based Tier 1 classroom management system:

Which evidence-based system(s) are you using?	Provide 3-4 measurable and observable action steps the team will take to help educators improve their classroom management system. <i>(3-4 detailed steps)</i>
<input checked="" type="checkbox"/> CHAMPS <input checked="" type="checkbox"/> Positive Behavior Interventions and Supports and the Classroom https://fl-pda.org/#/category/26 <input checked="" type="checkbox"/> Other: Click here to enter name of system.	1. CHAMPS Professional Development 2. PBIS Self – Paced Overview Course of TIER 1 PBIS Systems 3. Continual support and usage of ROARS Bucks with continuous implementation by all staff and continuous rewards for students 4. Continual onsite Professional Development in building classroom communities and SEL opportunities to reduce overall behavior infractions

8B. The administration reviews and analyzes the fidelity of staff implementation of Tier 1 classroom management systems **across teachers** using:

<input checked="" type="checkbox"/> CHAMPS 7 Up Checklist 
<input checked="" type="checkbox"/> Classroom Snapshot (Classroom Management Assessment) 
<input checked="" type="checkbox"/> PBIS Classroom Assistance Tool (CAT) 
<input type="checkbox"/> Other (<i>specify</i>):

8C. Percentage of classroom referrals: **Use current 2024-2025 school year behavior data** as listed in Focus.

(a) Review your classroom data YTD in Focus – Discipline – Category Breakdown – *Location*.

(b) Complete the yellow highlighted cells.

(c) Auto-calculate the % of referrals in the classroom by clicking on “!Zero Divide” in the next cell and pressing “Fn + F9” together.

Total number of discipline referrals from classrooms :	0
Total number of <i>other school-wide</i> discipline referrals (not including classrooms):	0
% of referrals in the classroom:	!Zero Divide
Do more than 40% of your referrals come from the classroom?	<input type="checkbox"/> Yes <input checked="" type="checkbox"/> No

If >40% of discipline referrals come from the classroom, it suggests Tier 1 classroom management implementation may need to be strengthened school wide.

Critical Elements # 9: SPBP Implementation Planning

RED Font = Action Steps for all schools in Broward County

GREY Font = Best Practices for all schools in Broward County

TEAL Font = Resources available at <https://browardschools.instructure.com/enroll/PWF673>

Implementation Action Plan	
Month	Action Steps
	<input checked="" type="checkbox"/> check off Action Step when completed
Current	<input checked="" type="checkbox"/> Create an SPBP binder or portfolio to retain (for 2 years) hard copies of: your SPBPs, Action Plans, staff PBIS professional development attendance, stakeholder training attendance, quarterly meeting agendas, quarterly staff behavior presentations, voting attendance and outcome, Expectations lesson plans and Rules lesson plans
Pre-Planning	<input type="checkbox"/> Print up your SPBP and Feedback form BCPS Central <input type="checkbox"/> Provide SPBP presentation to all staff during Pre-Planning <input type="checkbox"/> Disseminate the current SPBP (hard copy or electronically) to all staff and stakeholders <input type="checkbox"/> Market and post School-wide Expectations and Location-specific Rules <input type="checkbox"/> Identify your district PBIS Specialist (Contact amber.jennings@browardschools.com for more information if you are unsure) <input type="checkbox"/> Ensure schedule of quarterly meeting dates for entire year as indicated in the SPBP (indicated in yellow)
August 1 st Quarter Team Meeting	<input type="checkbox"/> Determine any needed team training, such as: 4 Step Problem Solving Process series, PBIS 10 Critical Elements, Data Collection, etc. <input type="checkbox"/> Review previous year's SPBP and feedback form; make necessary modifications <input type="checkbox"/> Review previous year's data (Use Tier 1 Agenda and Quarter Big 5 Data template on PBIS Canvas page) <input type="checkbox"/> Verify and implement teaching schedule for Expectations and Rules behavior lesson plans <input type="checkbox"/> Implement the Reward System for all students as indicated in the SPBP <input type="checkbox"/> Ensure the Discipline Flow Chart is distributed to all staff and is being used as written <input type="checkbox"/> Present implementation data, behavior data, team activities and SPBP progress to entire staff <input type="checkbox"/> Ensure all teachers are using an evidence-based classroom management plan, such as CHAMPS <input type="checkbox"/> Confirm next quarterly PBIS team meeting date and time
September	<input type="checkbox"/> Provide SPBP stakeholder presentation by September 30 th <input type="checkbox"/> Ensure instructional staff know how to document Tier 1 Supplemental Strategies for behavior <input type="checkbox"/> Check for staff and teacher understanding of PBIS - provide "PBIS 101" training as a resource Brainshark available at: http://www.brainshark.com/browardschools/PBIS101
October 2 nd Quarter Team Meeting	<input type="checkbox"/> Review previous quarter's data. (Use Tier 1 Agenda and Quarter Big 5 Data template on PBIS Canvas page) <input type="checkbox"/> Present implementation data, behavior data, team activities, and SPBP progress to entire staff <input type="checkbox"/> Ensure Core Effectiveness Action Steps are being implemented as written <input type="checkbox"/> Complete Quarterly Big 5 Data Template and submit to your PBIS Administrator <input type="checkbox"/> Confirm next quarterly PBIS team meeting date and time
November	<input type="checkbox"/> Review/revise lesson plans as indicated by previous quarter behavior data <input type="checkbox"/> Ensure that the Student Outcome Monitoring Action Steps are being implemented as written
January 3 rd Quarter Team Meeting	<input type="checkbox"/> Staff to re-teach Expectations and Rules after winter break <input type="checkbox"/> Review previous quarter's data. (Use Tier 1 Agenda and Quarter Big 5 Data template on PBIS Canvas page) <input type="checkbox"/> Present implementation data, behavior data, team activities, and SPBP progress to entire staff <input type="checkbox"/> Complete Quarterly Big 5 Data Template and submit to your PBIS Administrator <input type="checkbox"/> Confirm next quarterly PBIS team meeting date and time
February	<input type="checkbox"/> Check on recently hired staff for PBIS understanding - provide "PBIS 101" Brainshark resource <input type="checkbox"/> Utilize the Stakeholder SPBP Forms Survey to solicit input for planning next year's SPBP (optional)
March 4 th Quarter Team Meeting	<input type="checkbox"/> Ensure progress towards completion and submission of next year's SPBP <input type="checkbox"/> Staff to re-teach Expectations and Rules after spring break <input type="checkbox"/> Review previous quarter's data. (Use Tier 1 Agenda and Quarter Big 5 Data template on PBIS Canvas page) <input type="checkbox"/> Present implementation data, behavior data, team activities, and SPBP progress to entire staff <input type="checkbox"/> Complete Quarterly Big 5 Data Template and submit to your PBIS Administrator
April	<input type="checkbox"/> Provide staff presentation and faculty vote on new SPBP for next year <input type="checkbox"/> Submit your SPBP in BCPS Central by April 30 th . Use this new SPBP in the next school year <input type="checkbox"/> Continue implementing your current SPBP through the end of the current school year

CRITICAL ELEMENT # 10: Evaluation

10A. Staff Implementation of the Schoolwide Positive Behavior Plan: review goals, evaluate implementation, and create 2 action steps to review in quarterly PBIS meetings.

“Are staff implementing the SPBP with fidelity? If not, how will you address this area?”

STAFF Implementation Monitoring		
Staff Implementation Goal	Quarterly Team Review: Implemented with fidelity?	If you answered No , enter 2 action steps your school will take to move towards this goal by the next PBIS meeting.
100% of hallways, front office, cafeteria, and other public areas all have school-wide expectations and location-specific rules posted.	<input checked="" type="checkbox"/> Yes <input type="checkbox"/> No	By Click here to enter a date, 1. 2.
100% of instructional staff has delivered expectations and rules lesson plans as written and when indicated.	<input checked="" type="checkbox"/> Yes <input type="checkbox"/> No	By Click here to enter a date, 1. 2.
100% of staff members are oriented to the Discipline Flow Chart. It is used consistently by 100% instructional staff, behavioral support, and administrators.	<input checked="" type="checkbox"/> Yes <input type="checkbox"/> No	By Click here to enter a date, 1. 2.
A recognition system is implemented by 100% staff for <i>all</i> students.	<input checked="" type="checkbox"/> Yes <input type="checkbox"/> No	By Click here to enter a date, 1. 2.


10B. The SPBP is successful in positively impacting **students**: review behavior data and create a SMART goal. Evaluate implementation and create action steps to review in quarterly PBIS meeting.

“If staff are implementing the SPBP consistently and effectively, is it positively impacting students? How will you know?”

SMART Criteria:

S	Specific	Concrete, detailed, focused, and well defined. Results-focused and action-orientated.
M	Measurable	The measurement sources (data) are defined numerically in order to track progress towards the objective.
A	Attainable	Objectives are achievable in the near future to maintain motivation.
R	Realistic	Staff have the resources to achieve the objective- time, personnel, materials, etc.
T	Time-bound	Agreed-on time frames create the necessary urgency and prompt action.

STUDENT Outcome Monitoring		
Student Outcome Data	Complete the SMART goal to determine “successful” student outcomes <i>(use numerical data)</i>	List 2 action steps your team will take to ensure this goal is monitored and meets or exceeds the SMART goal.
Overall ODRs <i>Choose one ODR area of focus</i>	By June 3, 2026, click here to enter area of focus <i>[identify one area of focus]</i> will indicate click here to enter # <i>[increased or decreased number or percentage]</i> as measured by Office Discipline Referrals (ODRs) in Focus.	1. 2.

SPBP Submission
<ol style="list-style-type: none"> 1. Upload completed SPBP (as PDF) into BCPS Central in the School Improvement Plan.  2. Complete PBIS Point of Contact form. 