



**Schoolwide Positive Behavior Plan (SPBP)**  
Broward County Public Schools



**SY 2025 – 2026**

<b>School Name:</b>	Meadowbrook Elementary School
<b>School Number:</b>	0761

Please refer to the SPBP Canvas Resource page to access video tutorials, guidance, and resources for completing the 2025-2026 SPBP template.

**CRITICAL ELEMENT # 1: Active Team with Administrative Participation**

**1A. Integrated MTSS School-Leadership Team Members**

Title	First and Last Name	Title	First and Last Name
1. Administrator	Armelle Johnson	7. Security Specialist/ Campus Monitor	Constance Thomas
2. Point of Contact	Armelle Johnson	8. Social Worker	Monica Maria
3. BTU Representative	Lilliam Guilbee-Cruz	9. School Nurse	TBD
4. Parent/Community Representative	Kassandra Gutierrez	10. Attendance Manager	Milagro Acosta
5. Student Representative	N/A	11. Life Skills & Wellness Liaison	Sarah Sternglanz
6. School Counselor	Sarah Sternglanz	12. Resiliency Liaison	Sarah Sternglanz

\*Optional Team Member(s): Family Therapist, Grade Level/Content Area Representatives, Clerical, Custodial, Food/Nutrition

**1B. Schedule of quarterly team meetings.**

Meeting Objectives:

1. Progress monitor the action steps indicated in Critical Element #9.
2. Collect & analyze student outcome data using the 4 Step Problem Solving Process.

Quarter	PBIS Data Meeting Dates	PBIS Data Meeting Times		Faculty and Staff Data Communication/Presentation Dates
1 <sup>st</sup>	8/6/2025	2:15 – 3:00		9/1/2025
2 <sup>nd</sup>	11/4/2025	2:15 – 3:00		11/10/2025
3 <sup>rd</sup>	1/5/2026	2:15 – 3:00		1/12/2026
4 <sup>th</sup>	3/13/2026	2:15 – 3:00		4/6/2026

**CRITICAL ELEMENT # 2: Faculty & Stakeholder Commitment**

**2. Team communication/presentation of new SPBP to staff and stakeholders**

Action Steps:	Dates
Present the 2025-26 SPBP to staff ( <i>prior to April 30, 2025</i> )	4/7/2025
Hold a <i>faculty</i> vote on the new SPBP ( <i>prior to April 30, 2025</i> )	4/17/2025
Provide training to faculty and staff ( <i>prior to September 30, 2025</i> )	8/4/2025
Present the 2025-26 SPBP to family and community stakeholders ( <i>prior to September 30, 2025</i> )	9/18/2025

## CRITICAL ELEMENT # 3: Data Collection and Analysis

### 3A. Core Effectiveness: Use current 2024-2025 school year behavior data as listed in Focus.

- Review your referral data YTD in Focus – Discipline Reports – *Students with Referrals*.
- Complete the yellow highlighted cells.
- Auto-calculate the “% of Total Population” by clicking on each “!Zero Divide” in the cells and pressing “Fn + F9”.
- Determine if the core is effective in all three areas.

TOTAL Population:	673	% of Total Population	Core Effectiveness	
# Referrals:	# of Students:			
I. 0 - 1 referrals		99%	Are your 0 – 1 referral > 80%?	<input checked="" type="checkbox"/> Yes <input type="checkbox"/> No
II. 2 - 5 referrals (at risk students)	5	1%	Are your 2 - 5 referrals <15%?	<input checked="" type="checkbox"/> Yes <input type="checkbox"/> No
III. > 5 referrals (high-risk students)	3	0%	Are your >5 referrals <5%?	<input checked="" type="checkbox"/> Yes <input type="checkbox"/> No

### 3B. Core Effectiveness Action Steps:

If you answered “Yes” to I, II, and III above, then your core is effective. Based upon table 8A, is your core effective?	<input checked="" type="checkbox"/> Yes <input type="checkbox"/> No
Answer <b>either</b> (a) or (b): (a) If your core is effective, then identify action steps your school leadership team should continue to take for early identification of at risk or high-risk students. (b) If you answered “No” to at least one of the items above (I, II, or III) then indicate the supports and interventions and action steps your school leadership team will implement <i>at the beginning</i> of the next school year to improve core strength:	
Core Effectiveness Action Steps: <i>(3-4 detailed steps)</i>	
<ol style="list-style-type: none"> <li>Data from incoming and returning students’ risk factor (s) will be pulled from FOCUS.</li> <li>Ensure all teachers are trained to use Suite 360 and school-wide expectations and implement expectations with fidelity.</li> <li>Ensure students are taught and reminded of the school-wide expectations.</li> <li>Ensure high-risk students are placed on a behavior monitoring plan.</li> </ol>	

**3C.** Disproportionality is often measured with the relative risk statistic calculation (Relative Risk Ratio = RRR), a measure that indicates the probability of a certain event (e.g., referrals) for one subgroup when compared to all other subgroups.

Relative Risk Ratio calculations are coming soon with the Focus Data System migration.

### 3D. Disproportionality Action Steps:

What activities/initiatives/programs will your school leadership team implement to prevent disproportionate discipline outcomes within sub group populations (race, SWD, ELL)?
Disproportionality Action Steps: <i>(3-4 detailed steps)</i>
<ol style="list-style-type: none"> <li>Provide professional development for all teachers at the beginning of the school year and refresh as needed.</li> <li>Ensure teachers use the Discipline Flow Chart with fidelity (Critical Element #6)</li> <li>Ensure students with behavior concerns are referred to the Response to Intervention (MTSS/RtI)</li> <li>Ensure discipline infractions and praise are distributed equitably.</li> </ol>

## CRITICAL ELEMENT # 4: Schoolwide Expectations & Location-based Rules

- 4A.** Top five behavior incidents: **Use current 2024-2025 school year behavior data** as listed in Focus.
- (a) Review your referral data YTD in Focus – Discipline – Category Breakdown – *Highest Discipline Code*.
  - (b) Complete the chart by identifying the top five behavior incidents and the number of incidents for each type.
  - (c) Complete the yellow highlighted cells.
  - (d) Auto-calculate the total # of referrals by clicking on “0” and pressing “Fn + F9” together.

Top 5 Behavior Incidents Current Year 2024-2025	# Incidents
1. Unruly Disruptive Behavior	15
2. Fight, Minor Altercation	4
3. Battery (Low Level)	4
4. Out of Assigned Area	3
5. Unsubstantiated Bullying	3
TOTAL	29

- 4B.** School-wide expectations are 3 – 5 positive characteristics (*not behaviors*) that counteract the top school-wide misbehaviors in section 3A. ALL people on campus are expected to model these expectations.

Schoolwide Expectations
1. Self-Control
2. Organized for Learning
3. Accountable Behavior
4. Respect for Everyone

- 4C.** Top three school-wide locations: **Use current 2024-2025 school year behavior data** as listed in Focus.
- (a) Review your referral data YTD in Focus – Discipline – Category Breakdown – *Location*.
  - (b) Complete the chart by identifying the top three schoolwide locations, excluding classroom and the number of incidents for each location.

Top 3 Locations, <b>excluding Classroom:</b>	
School Location(s)	# Incidents
1. Hallway	<b>7</b>
2. School Grounds	<b>7</b>
3. Cafeteria	<b>5</b>

**4D.** Expectations and Rules Chart for common areas of school campus:  
 This chart is posted in all classrooms and used to teach students during behavior lessons.

<b>Schoolwide Expectations and Location-based Rules</b>				Completed by each teacher:
<b>Schoolwide EXPECTATIONS</b>	<b>Hallway Rules</b>	<b>Cafeteria Rules</b>	<b>School Grounds Rules</b>	<b>Classroom Rules</b>
<b>1. Self-Control</b>	Walk quietly in class line. Walking with partner. Respect personal space. Keep hands and feet to yourself	Wait patiently Keep your area clean Sit with your feet under the table	Follow all campus rules at all times  Keep your hands and feet to yourself	
<b>2. Organized for Learning</b>	Follow adult directions Have your ID badge at all times	Use good manners and kind words Be a good friend Have your ID badge at all times	Follow adult directions Have your ID badge at all times	
<b>3. Accountable Behavior</b>	Follow adult directions Respect personal Space Walk directly to your destination	Sit in your assigned area Use your level 2 voice.	Follow adult directions Keep school grounds clean Keep belongings in backpack (including cell phones)	
<b>4. Respect for Everyone</b>	Be respectful to yourself and others	Follow adult directions Be respectful to yourself and others	Follow adult directions Keep hands, feet, and other objects to yourself	

## CRITICAL ELEMENT #5: Teaching Behavior

**5A.** At least one lesson plan for **each** schoolwide expectation above is distributed to instructional staff during pre-planning week and are maintained in the SPBP Binder.

Dates when the schoolwide expectations lesson plans are taught by instructional staff and noted in lesson plans:			
	Date(s)	Time:	Location(s):
Start of School Year	8/12/2025	8:30 AM	Classroom/Cafeteria
After Winter Break	1/6/2026	8:30 AM	Classroom/Cafeteria
After Spring Break	3/24/2026	8:30 AM	Classroom/Cafeteria

**5B.** At least one Rules Lesson Plan for **each** common location is distributed to instructional staff during pre-planning. This is aligned to the **Schoolwide Expectation/Location-based Rules** chart in section 4D. Location-based rules should be taught and reinforced in the context of the location in the beginning of the year, after long breaks, and throughout the year as necessary.

Dates when the rules lesson plans for common locations are taught by instructional staff and noted in lesson plans:			
Common Location	Hallway Rules	Cafeteria Rules	Playground
Lesson Plan Dates			
Start of School Year	8/12/2025	8/12/2025	8/12/2025
After Winter Break	1/6/2026	1/6/2026	1/6/2026
After Spring Break	3/24/2026	3/24/2026	3/24/2026

**5C.** Prevention programs and other schoolwide student support initiatives can be used to proactively teach positive behavior and prosocial skills. Use this chart to plan for how you will use District supported programs and initiatives to promote positive behavior on campus.


Program/Initiative	Plan Details			
	When will it be taught?	Who will teach it?	How will it be implemented? <i>2-3 sentences</i>	How will it be monitored for effectiveness?
<b>Character Education</b>	Monthly lessons provided via Life Skills and Wellness ReThink Ed scope and sequence.	Classroom Teachers and School Counselor	Teachers nominate one student per month to receive the award via a Forms document sent on the first of each month. School Counselor holds a Popsicle Party at the end of each month to celebrate recipients.	Increased student motivation to receive recognition for great character, measured by reduced behavioral referrals.
<b>Resiliency Curriculum</b>	Substance Misuse lessons in October. Internet Safety in November. Safer Smarter Kids: Monthly during wellness Wednesday	Classroom Teachers, during ELA block.  School Counselor to assist as needed.	Teachers are provided emailed reminders that include the monthly schedule.	School counselor will monitor ReThink Ed lesson completion for Substance Abuse and Internet Safety. School Counselor will receive monthly status reports for Safer Smarter Kids completion.

## CRITICAL ELEMENT # 6: Recognition Programs

**6A.** The schoolwide recognition system focuses on reinforcing schoolwide expectations OR a specific location where referrals often occur. The recognition should be used to encourage, acknowledge, and reinforce students to exhibit positive behaviors.

Identified Schoolwide Expectation OR Specific Location: [Click here to enter Expectation OR Location](#)

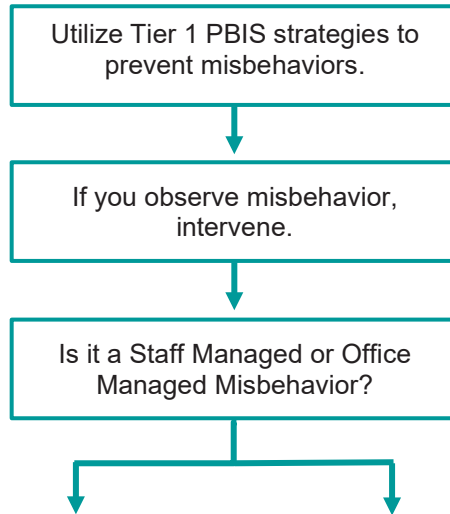
4 Step Problem Solving Process	Plan Details
<p><b>1. Problem Identification:</b> Review your behavior data to identify one school-wide problem. What problem did you identify? <i>(use numerical data)</i></p>	<p><b>Data used:</b> FOCUS Discipline Data-Unruly/Disruptive Behavior</p> <p><b>Problem Identification Statement:</b> <i>Students are demonstrating unruly/disruptive (15) behavior in a variety of settings when not under the direct supervision of an adult.</i></p>
<p><b>2. Problem Analysis:</b> Why do you think this problem is occurring? What is your goal? <i>(create a SMART goal statement with numerical data)</i></p>	<p><b>Hypothesis:</b> This problem is occurring because students are learning how to self-regulate, follow rules, and demonstrate good character.</p> <p><b>SMART Goal Statement:</b> By the end of the third quarter in 2026, office discipline referrals with Unruly/Disruptive Behavior will decrease from 15 to less than 8 (50% reduction).</p>
<p><b>3. Intervention Design:</b> Describe how you will implement a positive reward program/system to decrease this problem.</p>	<p><b>Type of Program/System:</b> Token system</p> <p><b>Description of Program/System:</b> <i>SOAR Tickets Incentive Program: Students must follow our "SOAR" behavior expectations which are: self-control, organized for learning, acceptable behavior, and respect for everyone. Students must be accountable for demonstrating the "SOAR" expectations throughout the entire school environment 100% of the time.</i></p>
<p><b>4. Evaluation:</b> A. Implementation fidelity</p>	<p><b>How will you monitor the fidelity (consistency and effectiveness) of the staff's implementation of the reward program/system?</b> <i>Students will be rewarded an individual "White SOAR Ticket" from any adult in the school if they are exhibiting SOAR behavior traits. Also, if an entire class is exhibiting great SOAR behavior, they will receive a "Blue SOAR Ticket". There will be a weekly drawing for grades K through 5th for the White SOAR Tickets for individual winners. Afterwards, two classes will be selected from K to 5th grade for the Blue Soar Tickets including one primary and one intermediate class. All winners will receive a prize/treat.</i></p>
<p>B. Student outcome monitoring <i>(use numerical data)</i></p>	<p><b>How will you know if the reward program/system is positively impacting students? What measurable data will you use to determine "success"?</b> <i>The number of referrals for Unruly Disruptive Behavior will be collected every Friday by the Assistant Principal to ensure the system is positively impacting the office discipline referrals and no partial modifications need to be made. The total number of office discipline referrals for the third quarter will be collected by the Assistant Principal and will be reviewed at the March SPBP meeting. At this meeting the team will determine if our goal was met.</i></p>

**6B.** *Character Education* is an educational and award program utilized to teach and recognize students who display positive character traits each month. Please refer to the BCPS website for lesson plans, videos and additional resources to support this recognition program at your school. 

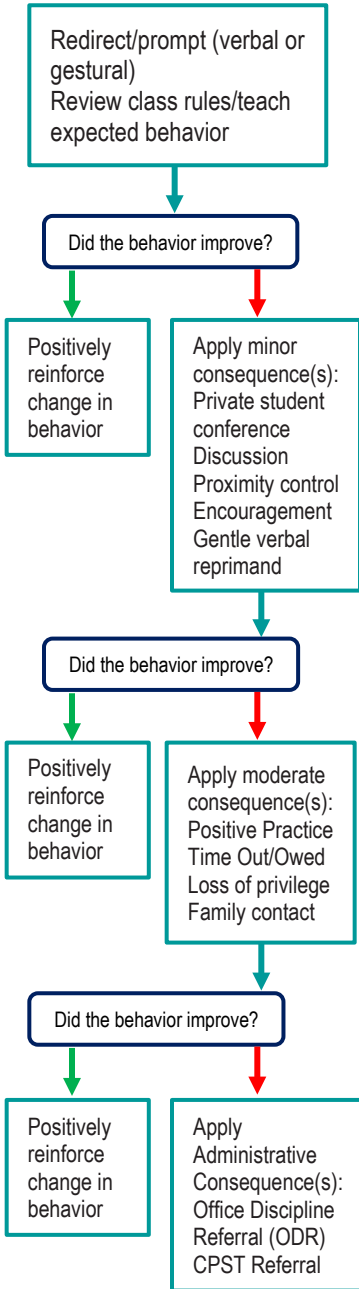
Monthly Character Traits	Plan Details How will you recognize <i>Kids of Character</i> each month? <i>(2-3 sentences)</i>
<ol style="list-style-type: none"> <li>1. September: Cooperation</li> <li>2. October: Responsibility</li> <li>3. November: Citizenship</li> <li>4. December: Kindness</li> <li>5. January: Respect</li> <li>6. February: Honesty</li> <li>7. March: Self-Control</li> <li>8. April: Tolerance</li> </ol>	<p>School Counselor holds a Popsicle Party at the end of each month to celebrate recipients. Students receive a certificate to recognize their accomplishment.</p>

# CRITICAL ELEMENT #7: Effective Discipline Procedures

You can choose to use the flow chart below or create your own. This flow chart is posted in all classrooms and used to teach students during behavior lessons.



- Tier 1 Strategies include, but are not limited to:
- Effective classroom structure
  - Precorrection
  - Preferential seating/seat change
  - Remove distractions
  - Personal schedule/organization
  - Reteach expectations and rules
  - Redirection
  - Prompts, cues, and reminders
  - Think time/cool down area
  - Consistent reward system
  - Modify academic assignments
  - Provide choices



Staff Managed Misbehaviors	Office Managed Misbehaviors
Note: The behaviors provided are examples, not an exhausted list of misbehaviors.	
<b>Inappropriate language</b> <ul style="list-style-type: none"> <li>name calling</li> <li>use of profanity</li> </ul>	<b>Inappropriate language</b> <ul style="list-style-type: none"> <li>racial slurs or taunting</li> <li>profanity directed at a staff member</li> </ul>
<b>Disrespect</b> <ul style="list-style-type: none"> <li>talking back</li> <li>physical gestures</li> </ul>	<b>Harassment</b> <ul style="list-style-type: none"> <li>bullying</li> <li>threat or intimidation</li> </ul>
<b>Defiance</b> <ul style="list-style-type: none"> <li>work refusal</li> <li>head down on desk/sleeping</li> <li>not following directions</li> </ul>	<b>Defiance</b> <ul style="list-style-type: none"> <li>leaving classroom, assigned area, or school grounds without permission</li> <li>forgery/plagiarism</li> </ul>
<b>Disruptive</b> <ul style="list-style-type: none"> <li>tattling/false information</li> <li>talking out of turn</li> <li>calling out distracting others</li> </ul>	<b>Disruptive</b> <ul style="list-style-type: none"> <li>inciting others to disrupt teacher</li> <li>chronic classroom disruption: more than 3 times within 30 minutes</li> </ul>
<b>Physical Contact</b> <ul style="list-style-type: none"> <li>touching others, pushing/shoving (no injuries)</li> <li>mutual horseplay</li> </ul>	<b>Physical Contact</b> <ul style="list-style-type: none"> <li>touching others (hitting, kicking, biting) with intent to do harm</li> <li>petty theft</li> </ul>
<b>Violation of classroom or location-specific rules</b>	<b>Violation of the Code of Student Conduct</b>

**Staff:**  
Submit an office discipline referral (ODR) using report style writing (non-judgmental, observable, and measurable language)

**Administrator:**  
Review, investigate and apply consequence according to policy  
Contact family to communicate incident and consequence  
Follow up with teacher/feedback/support




**Crises Events:**  
In need of immediate assistance  
Potentially unsafe environment  
Suspicion of criminal behavior  
Contact front office/administration immediately  
Follow safety team protocol

## CRITICAL ELEMENT # 8: Classroom Management Systems

### 8A. Evidence-based Tier 1 classroom management system:

Which evidence-based system(s) are you using?	Provide 3-4 measurable and observable action steps the team will take to help educators improve their classroom management system. <i>(3-4 detailed steps)</i>
<input checked="" type="checkbox"/> CHAMPS <input type="checkbox"/> Positive Behavior Interventions and Supports and the Classroom <a href="https://fl-pda.org/#/category/26">https://fl-pda.org/#/category/26</a> <input type="checkbox"/> Other: Click here to enter name of system.	<ol style="list-style-type: none"> <li>The team will provide professional development for classroom teachers and support staff to use the CHAMPS.</li> <li>Ensure that the Effective Discipline Procedures Flow Chart is posted in all classrooms and used to teach students during behavior lessons.</li> <li>Classroom management tips will be incorporated into faculty meetings and weekly staff memo.</li> </ol>

### 8B. The administration reviews and analyzes the fidelity of staff implementation of Tier 1 classroom management systems **across teachers** using:

<input checked="" type="checkbox"/> CHAMPs 7 Up Checklist 
<input type="checkbox"/> Classroom Snapshot (Classroom Management Assessment) 
<input type="checkbox"/> PBIS Classroom Assistance Tool (CAT) 
<input type="checkbox"/> Other ( <i>specify</i> ):

### 8C. Percentage of classroom referrals: **Use current 2024-2025 school year behavior data** as listed in Focus.

(a) Review your classroom data YTD in Focus – Discipline – Category Breakdown – Location.

(b) Complete the yellow highlighted cells.

(c) Auto-calculate the % of referrals in the classroom by clicking on “!Zero Divide” in the next cell and pressing “Fn + F9” together.

Total number of discipline referrals <b>from classrooms</b> :	16
Total number of <i>other school-wide</i> discipline referrals (not including classrooms):	28
% of referrals in the classroom:	36%
Do more than 40% of your referrals come from the classroom?	<input type="checkbox"/> Yes <input checked="" type="checkbox"/> No

***If >40% of discipline referrals come from the classroom, it suggests Tier 1 classroom management implementation may need to be strengthened school wide.***

## Critical Elements # 9: SPBP Implementation Planning

RED Font = Action Steps for all schools in Broward County

GREY Font = Best Practices for all schools in Broward County

TEAL Font = Resources available at <https://browardschools.instructure.com/enroll/PWF673>

Implementation Action Plan	
Month	Action Steps
	<input checked="" type="checkbox"/> check off Action Step when completed
Current	<ul style="list-style-type: none"> <li><input type="checkbox"/> Create an SPBP binder or portfolio to retain (for 2 years) hard copies of: your SPBPs, Action Plans, staff PBIS professional development attendance, stakeholder training attendance, quarterly meeting agendas, quarterly staff behavior presentations, voting attendance and outcome, Expectations lesson plans and Rules lesson plans</li> </ul>
Pre-Planning	<ul style="list-style-type: none"> <li><input type="checkbox"/> Print up your SPBP and Feedback form BCPS Central</li> <li><input type="checkbox"/> Provide SPBP presentation to all staff during Pre-Planning</li> <li><input type="checkbox"/> Disseminate the current SPBP (hard copy or electronically) to all staff and stakeholders</li> <li><input type="checkbox"/> Market and post School-wide Expectations and Location-specific Rules</li> <li><input type="checkbox"/> Identify your district PBIS Specialist (Contact <a href="mailto:amber.jennings@browardschools.com">amber.jennings@browardschools.com</a> for more information if you are unsure)</li> <li><input type="checkbox"/> Ensure schedule of quarterly meeting dates for entire year as indicated in the SPBP (indicated in yellow)</li> </ul>
August 1 <sup>st</sup> Quarter Team Meeting	<ul style="list-style-type: none"> <li><input type="checkbox"/> Determine any needed team training, such as: 4 Step Problem Solving Process series, PBIS 10 Critical Elements, Data Collection, etc.</li> <li><input type="checkbox"/> Review previous year's SPBP and feedback form; make necessary modifications</li> <li><input type="checkbox"/> Review previous year's data (Use Tier 1 Agenda and Quarter Big 5 Data template on PBIS Canvas page)</li> <li><input type="checkbox"/> Verify and implement teaching schedule for Expectations and Rules behavior lesson plans</li> <li><input type="checkbox"/> Implement the Reward System for all students as indicated in the SPBP</li> <li><input type="checkbox"/> Ensure the Discipline Flow Chart is distributed to all staff and is being used as written</li> <li><input type="checkbox"/> Present implementation data, behavior data, team activities and SPBP progress to entire staff</li> <li><input type="checkbox"/> Ensure all teachers are using an evidence-based classroom management plan, such as CHAMPS</li> <li><input type="checkbox"/> Confirm next quarterly PBIS team meeting date and time</li> </ul>
September	<ul style="list-style-type: none"> <li><input type="checkbox"/> Provide SPBP stakeholder presentation by September 30<sup>th</sup></li> <li><input type="checkbox"/> Ensure instructional staff know how to document Tier 1 Supplemental Strategies for behavior</li> <li><input type="checkbox"/> Check for staff and teacher understanding of PBIS - provide "PBIS 101" training as a resource Brainshark available at: <a href="http://www.brainshark.com/browardschools/PBIS101">http://www.brainshark.com/browardschools/PBIS101</a></li> </ul>
October 2 <sup>nd</sup> Quarter Team Meeting	<ul style="list-style-type: none"> <li><input type="checkbox"/> Review previous quarter's data. (Use Tier 1 Agenda and Quarter Big 5 Data template on PBIS Canvas page)</li> <li><input type="checkbox"/> Present implementation data, behavior data, team activities, and SPBP progress to entire staff</li> <li><input type="checkbox"/> Ensure Core Effectiveness Action Steps are being implemented as written</li> <li><input type="checkbox"/> Complete Quarterly Big 5 Data Template and submit to your PBIS Administrator</li> <li><input type="checkbox"/> Confirm next quarterly PBIS team meeting date and time</li> </ul>
November	<ul style="list-style-type: none"> <li><input type="checkbox"/> Review/revise lesson plans as indicated by previous quarter behavior data</li> <li><input type="checkbox"/> Ensure that the Student Outcome Monitoring Action Steps are being implemented as written</li> </ul>
January 3 <sup>rd</sup> Quarter Team Meeting	<ul style="list-style-type: none"> <li><input type="checkbox"/> Staff to re-teach Expectations and Rules after winter break</li> <li><input type="checkbox"/> Review previous quarter's data. (Use Tier 1 Agenda and Quarter Big 5 Data template on PBIS Canvas page)</li> <li><input type="checkbox"/> Present implementation data, behavior data, team activities, and SPBP progress to entire staff</li> <li><input type="checkbox"/> Complete Quarterly Big 5 Data Template and submit to your PBIS Administrator</li> <li><input type="checkbox"/> Confirm next quarterly PBIS team meeting date and time</li> </ul>
February	<ul style="list-style-type: none"> <li><input type="checkbox"/> Check on recently hired staff for PBIS understanding - provide "PBIS 101" Brainshark resource</li> <li><input type="checkbox"/> Utilize the Stakeholder SPBP Forms Survey to solicit input for planning next year's SPBP (optional)</li> </ul>
March 4 <sup>th</sup> Quarter Team Meeting	<ul style="list-style-type: none"> <li><input type="checkbox"/> Ensure progress towards completion and submission of next year's SPBP</li> <li><input type="checkbox"/> Staff to re-teach Expectations and Rules after spring break</li> <li><input type="checkbox"/> Review previous quarter's data. (Use Tier 1 Agenda and Quarter Big 5 Data template on PBIS Canvas page)</li> <li><input type="checkbox"/> Present implementation data, behavior data, team activities, and SPBP progress to entire staff</li> <li><input type="checkbox"/> Complete Quarterly Big 5 Data Template and submit to your PBIS Administrator</li> </ul>
April	<ul style="list-style-type: none"> <li><input type="checkbox"/> Provide staff presentation and faculty vote on new SPBP for next year</li> <li><input type="checkbox"/> Submit your SPBP in BCPS Central by April 30<sup>th</sup>. Use this new SPBP in the next school year</li> <li><input type="checkbox"/> Continue implementing your current SPBP through the end of the current school year</li> </ul>

## CRITICAL ELEMENT # 10: Evaluation

**10A. Staff** Implementation of the Schoolwide Positive Behavior Plan: review goals, evaluate implementation, and create 2 action steps to review in quarterly PBIS meetings.

*"Are staff implementing the SPBP with fidelity? If not, how will you address this area?"*

STAFF Implementation Monitoring		
Staff Implementation Goal	Quarterly Team Review: Implemented with fidelity?	If you answered <b>No</b> , enter 2 action steps your school will take to move towards this goal by the next PBIS meeting.
100% of hallways, front office, cafeteria, and other public areas all have school-wide expectations and location-specific rules posted.	<input checked="" type="checkbox"/> Yes <input type="checkbox"/> No	By Click here to enter a date, 1. 2.
100% of instructional staff has delivered expectations and rules lesson plans as written and when indicated.	<input checked="" type="checkbox"/> Yes <input type="checkbox"/> No	By Click here to enter a date, 1. 2.
100% of staff members are oriented to the Discipline Flow Chart. It is used consistently by 100% instructional staff, behavioral support, and administrators.	<input checked="" type="checkbox"/> Yes <input type="checkbox"/> No	By Click here to enter a date, 1. 2.
A recognition system is implemented by 100% staff for <i>all</i> students.	<input checked="" type="checkbox"/> Yes <input type="checkbox"/> No	By Click here to enter a date, 1. 2.

**10B.** The SPBP is successful in positively impacting **students**: review behavior data and create a SMART goal. Evaluate implementation and create action steps to review in quarterly PBIS meeting.


*"If staff are implementing the SPBP consistently and effectively, is it positively impacting students? How will you know?"*

**SMART Criteria:**

S	Specific	Concrete, detailed, focused, and well defined. Results-focused and action-orientated.
M	Measurable	The measurement sources (data) are defined numerically in order to track progress towards the objective.
A	Attainable	Objectives are achievable in the near future to maintain motivation.
R	Realistic	Staff have the resources to achieve the objective- time, personnel, materials, etc.
T	Time-bound	Agreed-on time frames create the necessary urgency and prompt action.

STUDENT Outcome Monitoring		
Student Outcome Data	Complete the SMART goal to determine "successful" student outcomes ( <i>use numerical data</i> )	List 2 action steps your team will take to ensure this goal is monitored and meets or exceeds the SMART goal.
<b>Overall ODRs</b>	By June 3, 2026, <b>Unruly/Disruptive Behavior Office Discipline Referrals</b> will decrease by 50% as measured by Office Discipline Referrals (ODRs) in Focus.	<ol style="list-style-type: none"> <li>Teachers will use Tier 1 PBIS strategies to prevent misbehaviors and effectively use strategies provided on the SPBP Discipline Flow Chart for <b>staff managed misbehavior</b>.</li> <li>Support Staff will ensure that behavior lessons are implemented throughout the school year. This includes but is not limited to Suite 360 and Character Ed lessons.</li> </ol>

## SPBP Submission

1. Upload completed SPBP (as PDF) into BCPS Central in the School Improvement Plan. 
2. Complete PBIS Point of Contact form. 