



**Schoolwide Positive Behavior Plan (SPBP)**  
Broward County Public Schools



**SY 2025 – 2026**

<b>School Name:</b>	Bayview Elementary School
<b>School Number:</b>	0641

Please refer to the SPBP Canvas Resource page to access video tutorials, guidance, and resources for completing the 2025-2026 SPBP template. [i](#)

**CRITICAL ELEMENT # 1: Active Team with Administrative Participation**

**1A. Integrated MTSS School-Leadership Team Members**

Title	First and Last Name	Title	First and Last Name
1. Administrator	Christina Murphy	7. Security Specialist/ Campus Monitor	Michelle Mongeon
2. Point of Contact	Christina Murphy	8. Social Worker	Ataysha Fenelon
3. BTU Representative	Suzanna Halley	9. School Nurse	Emily Sullivan
4. Parent/Community Representative	Myriam Quijano	10. Attendance Manager	Ataysha Fenelon
5. Student Representative	Rowan Marchinares	11. Life Skills & Wellness Liaison	Elana Cohen
6. School Counselor	Elana Cohen	12. Resiliency Liaison	Elana Cohen

\*Optional Team Member(s): Family Therapist, Grade Level/Content Area Representatives, Clerical, Custodial, Food/Nutrition

**1B. Schedule of quarterly team meetings.**

Meeting Objectives:

1. Progress monitor the action steps indicated in Critical Element #9.
2. Collect & analyze student outcome data using the 4 Step Problem Solving Process.

Quarter	PBIS Data Meeting Dates	PBIS Data Meeting Times		Faculty and Staff Data Communication/Presentation Dates
1 <sup>st</sup>	10/8/2025	2:20	➡	10/15/2025
2 <sup>nd</sup>	12/10/2025	2:20	➡	12/17/2025
3 <sup>rd</sup>	3/11/2026	2:20	➡	3/18/2026
4 <sup>th</sup>	5/20/2026	2:20	➡	5/27/2026

**CRITICAL ELEMENT # 2: Faculty & Stakeholder Commitment**

**2. Team communication/presentation of new SPBP to staff and stakeholders**

Action Steps:	Dates
Present the 2025-26 SPBP to staff ( <i>prior to April 30, 2025</i> )	4/23/2025
Hold a <i>faculty</i> vote on the new SPBP ( <i>prior to April 30, 2025</i> )	4/23/2025
Provide training to faculty and staff ( <i>prior to September 30, 2025</i> )	8/6/2025
Present the 2025-26 SPBP to family and community stakeholders ( <i>prior to September 30, 2025</i> )	9/22/2025

## CRITICAL ELEMENT # 3: Data Collection and Analysis

**3A. Core Effectiveness:** Use current 2024-2025 school year behavior data as listed in Focus.

- Review your referral data YTD in Focus – Discipline Reports – *Students with Referrals*.
- Complete the yellow highlighted cells.
- Auto-calculate the “% of Total Population” by clicking on each “!Zero Divide” in the cells and pressing “Fn + F9”.
- Determine if the core is effective in all three areas.

TOTAL Population:	548	% of Total Population	Core Effectiveness	
# Referrals:	# of Students:			
I. 0 - 1 referrals	542	99%	Are your 0 – 1 referral > 80%?	<input checked="" type="checkbox"/> Yes <input type="checkbox"/> No
II. 2 - 5 referrals (at risk students)	5	1%	Are your 2 - 5 referrals <15%?	<input checked="" type="checkbox"/> Yes <input type="checkbox"/> No
III. > 5 referrals (high-risk students)	1	0%	Are your >5 referrals <5%?	<input checked="" type="checkbox"/> Yes <input type="checkbox"/> No

**3B. Core Effectiveness Action Steps:**

If you answered “Yes” to I, II, and III above, then your core is effective. Based upon table 8A, is your core effective?	<input checked="" type="checkbox"/> Yes <input type="checkbox"/> No
Answer <b>either</b> (a) or (b): (a) If your core is effective, then identify action steps your school leadership team should continue to take for early identification of at risk or high-risk students. (b) If you answered “No” to at least one of the items above (I, II, or III) then indicate the supports and interventions and action steps your school leadership team will implement <i>at the beginning</i> of the next school year to improve core strength:	
Core Effectiveness Action Steps: <i>(3-4 detailed steps)</i>	
<ol style="list-style-type: none"> <li>1. We will continue to bring any high-risk students to our MTSS Team to discuss strategies and interventions.</li> <li>2. Any new staff members will be trained on Zones of Regulation.</li> <li>3. FBA/PBIPS will continue to be monitored.</li> <li>4. We will use tier 1 proactive strategies with all students.</li> </ol>	

**3C. Disproportionality** is often measured with the relative risk statistic calculation (Relative Risk Ratio = RRR), a measure that indicates the probability of a certain event (e.g., referrals) for one subgroup when compared to all other subgroups.

Relative Risk Ratio calculations are coming soon with the Focus Data System migration.

**3D. Disproportionality Action Steps:**

What activities/initiatives/programs will your school leadership team implement to prevent disproportionate discipline outcomes within sub group populations (race, SWD, ELL)?
Disproportionality Action Steps: <i>(3-4 detailed steps)</i>
<ol style="list-style-type: none"> <li>1. Regularly review discipline data disaggregated by race, ethnicity, gender, ESE and ELL status.</li> <li>2. Strengthen Tier 1 supports with clear expectations and positive behavior reinforcement.</li> <li>3. Provide training on cultural misunderstandings.</li> </ol>

## CRITICAL ELEMENT # 4: Schoolwide Expectations & Location-based Rules

**4A.** Top five behavior incidents: **Use current 2024-2025 school year behavior data** as listed in Focus.

- (a) Review your referral data YTD in Focus – Discipline – Category Breakdown – *Highest Discipline Code*.
- (b) Complete the chart by identifying the top five behavior incidents and the number of incidents for each type.
- (c) Complete the yellow highlighted cells.
- (d) Auto-calculate the total # of referrals by clicking on “0” and pressing “Fn + F9” together.

Top 5 Behavior Incidents Current Year 2024-2025	# Incidents
1. Disruption on Campus Minor	7
2. Battery Low Level	5
3. Unruly/Disruptive Behavior	5
4. Insulting/Profane Language	4
5. Disruptive Unruly Play	4
TOTAL	25

**4B.** School-wide

3 – 5 positive characteristics (*not behaviors*) that counteract the top school-wide misbehaviors in section 3A. ALL people on campus are expected to model these expectations. expectations are

Schoolwide Expectations
1. Be Respectful
2. Be Responsible
3. Be Safe
4.
5.

**4C.** Top three school-wide locations: **Use current 2024-2025 school year behavior data** as listed in Focus.

- (a) Review your referral data YTD in Focus – Discipline – Category Breakdown – *Location*.
- (b) Complete the chart by identifying the top three schoolwide locations, excluding classroom and the number of incidents for each location.

Top 3 Locations, <b>excluding Classroom:</b>	
School Location(s)	# Incidents
1. Cafeteria	<b>7</b>
2. Playground	<b>5</b>
3. Bus/Hallway/Student Area	<b>3</b>

**4D.** Expectations and Rules Chart for common areas of school campus:  
 This chart is posted in all classrooms and used to teach students during behavior lessons.

<b>Schoolwide Expectations and Location-based Rules</b>				Completed by each teacher:
<b>Schoolwide EXPECTATIONS</b>	<b>Hallway Rules</b>	<b>Cafeteria Rules</b>	<b>Playground Rules</b>	<b>Classroom Rules</b>
<b>Be Respectful</b>	Click here to select hallway rules OR <b>Walk Silently</b>	Click here to select cafeteria rules OR <b>Follow all directions given by the café monitors/adults</b>	Click here to select location rules OR <b>Play fair and have fun!</b>	
<b>Be Responsible</b>	Click here to select hallway rules OR <b>Walk to your class</b>	Click here to select cafeteria rules OR <b>Use proper table manners</b>	Click here to select location rules OR <b>Take a break if needed</b>	
<b>Be Safe</b>	Click here to select hallway rules OR <b>Keep hands and feet to yourself.</b>	Click here to select cafeteria rules OR <b>Clean your eating space and pick up trash around your area.</b>	Click here to select location rules OR <b>Follow Directions</b>	
Click here to type your Expectation	Click here to select hallway rules OR Click here to type hallway rules.	Click here to select cafeteria rules OR Click here to type cafeteria rules.	Click here to select location rules OR Click here to type location rules.	
Click here to type your Expectation	Click here to select hallway rules OR Click here to type hallway rules.	Click here to select cafeteria rules OR Click here to type cafeteria rules.	Click here to select location rules OR Click here to type location rules.	

## CRITICAL ELEMENT #5: Teaching Behavior

**5A.** At least one lesson plan for **each** schoolwide expectation above is distributed to instructional staff during pre-planning week and are maintained in the SPBP Binder.

Dates when the schoolwide expectations lesson plans are taught by instructional staff and noted in lesson plans:			
	Date(s)	Time:	Location(s):
<b>Start of School Year</b>	8/11/2025	9:00 am	classroom
<b>After Winter Break</b>	1/5/2026	9:00 am	classroom
<b>After Spring Break</b>	4/13/2026	9:00 am	classroom

**5B.** At least one Rules Lesson Plan for **each** common location is distributed to instructional staff during pre-planning. This is aligned to the **Schoolwide Expectation/Location-based Rules** chart in section 4D. Location-based rules should be taught and reinforced in the context of the location in the beginning of the year, after long breaks, and throughout the year as necessary.

Dates when the rules lesson plans for common locations are taught by instructional staff and noted in lesson plans:			
Common Location	Hallway Rules	Cafeteria Rules	Playground
Lesson Plan Dates			
<b>Start of School Year</b>	8/11/2025	8/12/2025	8/11/2025
<b>After Winter Break</b>	1/5/2026	1/5/2026	1/5/2026
<b>After Spring Break</b>	4/13/2026	4/13/2026	4/13/2026

**5C.** Prevention programs and other schoolwide student support initiatives can be used to proactively teach positive behavior and prosocial skills. Use this chart to plan for how you will use District supported programs and initiatives to promote positive behavior on campus.

Program/Initiative	Plan Details			
	When will it be taught?	Who will teach it?	How will it be implemented? <i>2-3 sentences</i>	How will it be monitored for effectiveness?
<b>Character Education</b>	Monthly	Teachers/School Counselor/Assistant Principal	Character Education will be integrated into monthly themes. Each month, teachers will implement the traits into morning meetings and classroom lessons, while the school highlights exemplary behavior in the newsletter on morning announcements and on the morning news.	Decrease in office referrals
<b>Zones of Regulation</b>	At the beginning of the school year	ESE Specialist and Support Facilitator	Teachers and staff members will implement the Zones by helping students distinguish between expected and unexpected behaviors as well as identifying which "zone" they are in.	Decrease in referrals for students with disabilities.


			Regulation strategies will also be taught.	
--	--	--	--	--

**CRITICAL ELEMENT # 6: Recognition Programs**

**6A.** The schoolwide recognition system focuses on reinforcing schoolwide expectations OR a specific location where referrals often occur. The recognition should be used to encourage, acknowledge, and reinforce students to exhibit positive behaviors.

Identified Schoolwide Expectation OR Specific Location: Cafeteria

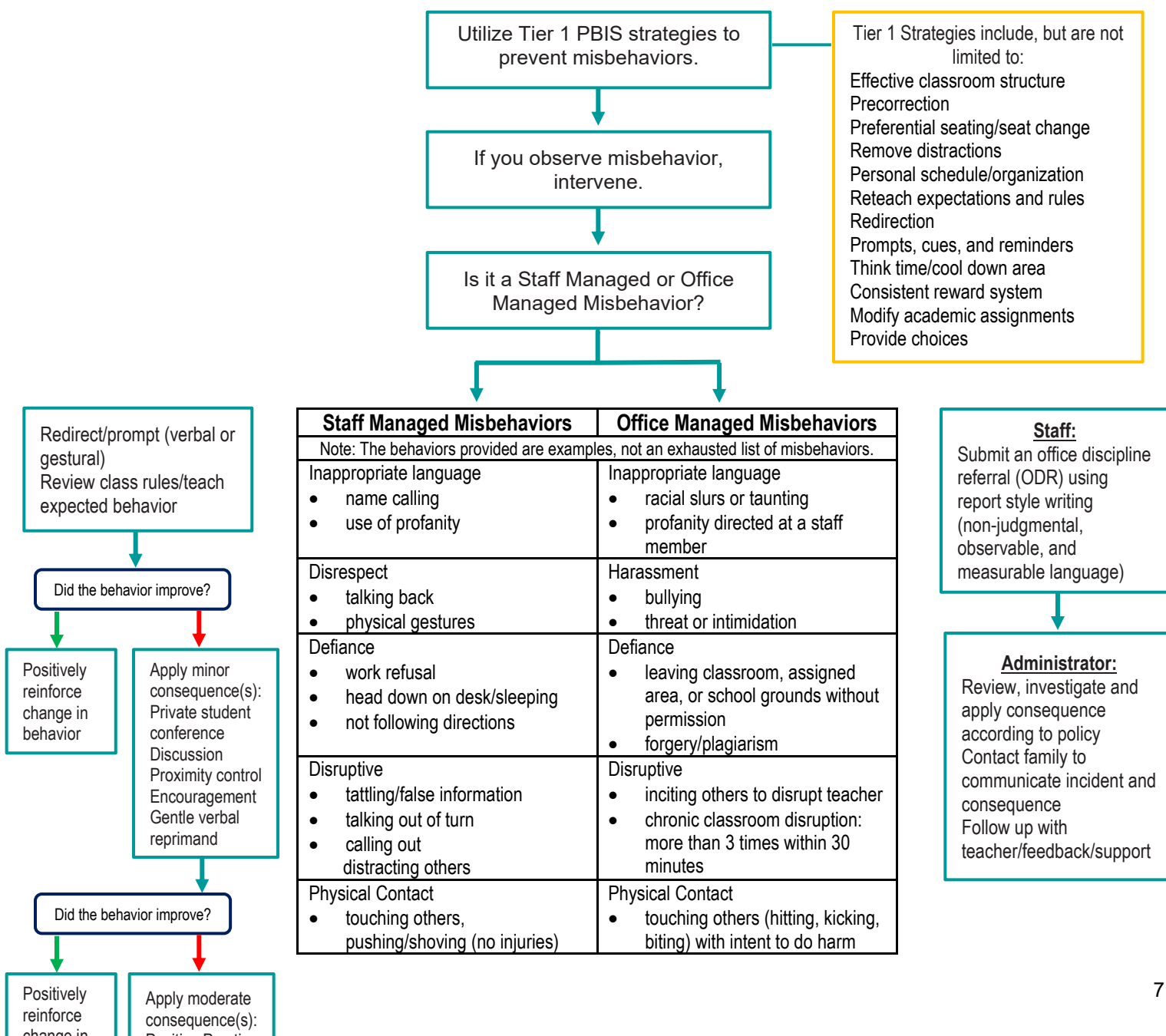
4 Step Problem Solving Process	Plan Details
<p><b>1. Problem Identification:</b> Review your behavior data to identify one school-wide problem. What problem did you identify? <i>(use numerical data)</i></p>	<p><b>Data used:</b> Referral data</p> <p><b>Problem Identification Statement:</b> Seven referrals were generated from the cafeteria this school year, identifying this as a hotspot for behavioral issues.</p>
<p><b>2. Problem Analysis:</b> Why do you think this problem is occurring? What is your goal? <i>(create a SMART goal statement with numerical data)</i></p>	<p><b>Hypothesis:</b> The cafeteria is one of our least structured environments without clear expectations, and limited staff presence.</p> <p><b>SMART Goal Statement:</b> By May 2026, the number of behavioral referrals will decrease by 40% from 7 to 4 through the implementation of clear behavioral expectations and positive reinforcement strategies in the cafeteria.</p>
<p><b>3. Intervention Design:</b> Describe how you will implement a positive reward program/system to decrease this problem.</p>	<p><b>Type of Program/System:</b> Point system</p> <p><b>Description of Program/System:</b> A positive reward program will be implemented in the cafeteria using a color-coded cup system to promote appropriate behavior. Each class will receive a green, yellow or red cup at the end of lunch based on their behavior. If a class receives a yellow or red cup, they do not earn a point for the day. At the end of the month, classes that have earned at least 75% of their possible points will receive a group reward, reinforcing consistent, positive cafeteria behavior.</p>
<p><b>4. Evaluation:</b> A. Implementation fidelity</p>	<p><b>How will you monitor the fidelity (consistency and effectiveness) of the staff's implementation of the reward program/system?</b> We will conduct weekly walkthroughs during lunch periods to observe consistency in how cups are assigned and expectations are reinforced. Additionally, a tracking sheet will be used to document daily cup colors for each class which will be reviewed to identify patterns or discrepancies.</p>
<p>B. Student outcome monitoring <i>(use numerical data)</i></p>	<p><b>How will you know if the reward program/system is positively impacting students? What measurable data will you use to determine "success"?</b> We will look for behavior referrals before and after implementation to look for a decrease. We will also track the percentage of classes earning green cups daily and monthly, aiming for a consistent increase over time.</p>

**6B. Character Education** is an educational and award program utilized to teach and recognize students who display positive character traits each month. Please refer to the BCPS website for lesson plans, videos and additional resources to support this recognition program at your school. 

Monthly Character Traits	Plan Details How will you recognize <i>Kids of Character</i> each month? (2-3 sentences)
1. September: Cooperation 2. October: Responsibility 3. November: Citizenship 4. December: Kindness 5. January: Respect 6. February: Honesty 7. March: Self-Control 8. April: Tolerance	Our school is proud to recognize our Kids of Character each month by celebrating their outstanding qualities and positive impact. Honorees will be featured in the school newsletter and on the morning news, and their families will be invited to join us for light refreshments. Each student will also receive a special certificate to commemorate their achievement. 4o

### CRITICAL ELEMENT #7: Effective Discipline Procedures

You can choose to use the flow chart below or create your own. This flow chart is posted in all classrooms and used to teach students during behavior lessons.








<ul style="list-style-type: none"><li>• mutual horseplay</li></ul>	<ul style="list-style-type: none"><li>• petty theft</li></ul>
Violation of classroom or location-specific rules	Violation of the Code of Student Conduct

## CRITICAL ELEMENT # 8: Classroom Management Systems

### 8A. Evidence-based Tier 1 classroom management system:

Which evidence-based system(s) are you using?	Provide 3-4 measurable and observable action steps the team will take to help educators improve their classroom management system. <i>(3-4 detailed steps)</i>
<input type="checkbox"/> CHAMPS <input checked="" type="checkbox"/> Positive Behavior Interventions and Supports and the Classroom <a href="https://fl-pda.org/#/category/26">https://fl-pda.org/#/category/26</a> <input type="checkbox"/> Other: Click here to enter name of system.	<ol style="list-style-type: none"> <li>1. Conduct regular classroom observations.</li> <li>2. Track student behavior data.</li> <li>3. Provide professional development and coaching.</li> <li>4. Implement a peer buddy program.</li> </ol>

### 8B. The administration reviews and analyzes the fidelity of staff implementation of Tier 1 classroom management systems **across teachers** using:

<input type="checkbox"/> CHAMPS 7 Up Checklist 
<input type="checkbox"/> Classroom Snapshot (Classroom Management Assessment) 
<input type="checkbox"/> PBIS Classroom Assistance Tool (CAT) 
<input checked="" type="checkbox"/> Other ( <i>specify</i> ): iobservation

### 8C. Percentage of classroom referrals: **Use current 2024-2025 school year behavior data** as listed in Focus.

(a) Review your classroom data YTD in Focus – Discipline – Category Breakdown – Location.

(b) Complete the yellow highlighted cells.

(c) Auto-calculate the % of referrals in the classroom by clicking on “!Zero Divide” in the next cell and pressing “Fn + F9” together.

Total number of discipline referrals <b>from classrooms</b> :	19
Total number of <i>other school-wide</i> discipline referrals (not including classrooms):	15
% of referrals in the classroom:	56%
Do more than 40% of your referrals come from the classroom?	<input checked="" type="checkbox"/> Yes <input type="checkbox"/> No

***If >40% of discipline referrals come from the classroom, it suggests Tier 1 classroom management implementation may need to be strengthened school wide.***

## Critical Elements # 9: SPBP Implementation Planning

RED Font = Action Steps for all schools in Broward County

GREY Font = Best Practices for all schools in Broward County

TEAL Font = Resources available at <https://browardschools.instructure.com/enroll/PWF673>

Implementation Action Plan	
Month	Action Steps
	<input checked="" type="checkbox"/> check off Action Step when completed
Current	<ul style="list-style-type: none"> <li><input type="checkbox"/> Create an SPBP binder or portfolio to retain (for 2 years) hard copies of: your SPBPs, Action Plans, staff PBIS professional development attendance, stakeholder training attendance, quarterly meeting agendas, quarterly staff behavior presentations, voting attendance and outcome, Expectations lesson plans and Rules lesson plans</li> </ul>
Pre-Planning	<ul style="list-style-type: none"> <li><input type="checkbox"/> Print up your SPBP and Feedback form BCPS Central</li> <li><input type="checkbox"/> Provide SPBP presentation to all staff during Pre-Planning</li> <li><input type="checkbox"/> Disseminate the current SPBP (hard copy or electronically) to all staff and stakeholders</li> <li><input type="checkbox"/> Market and post School-wide Expectations and Location-specific Rules</li> <li><input type="checkbox"/> Identify your district PBIS Specialist (Contact <a href="mailto:amber.jennings@browardschools.com">amber.jennings@browardschools.com</a> for more information if you are unsure)</li> <li><input type="checkbox"/> Ensure schedule of quarterly meeting dates for entire year as indicated in the SPBP (indicated in yellow)</li> </ul>
August 1 <sup>st</sup> Quarter Team Meeting	<ul style="list-style-type: none"> <li><input type="checkbox"/> Determine any needed team training, such as: 4 Step Problem Solving Process series, PBIS 10 Critical Elements, Data Collection, etc.</li> <li><input type="checkbox"/> Review previous year's SPBP and feedback form; make necessary modifications</li> <li><input type="checkbox"/> Review previous year's data (Use Tier 1 Agenda and Quarter Big 5 Data template on PBIS Canvas page)</li> <li><input type="checkbox"/> Verify and implement teaching schedule for Expectations and Rules behavior lesson plans</li> <li><input type="checkbox"/> Implement the Reward System for all students as indicated in the SPBP</li> <li><input type="checkbox"/> Ensure the Discipline Flow Chart is distributed to all staff and is being used as written</li> <li><input type="checkbox"/> Present implementation data, behavior data, team activities and SPBP progress to entire staff</li> <li><input type="checkbox"/> Ensure all teachers are using an evidence-based classroom management plan, such as CHAMPS</li> <li><input type="checkbox"/> Confirm next quarterly PBIS team meeting date and time</li> </ul>
September	<ul style="list-style-type: none"> <li><input type="checkbox"/> Provide SPBP stakeholder presentation by September 30<sup>th</sup></li> <li><input type="checkbox"/> Ensure instructional staff know how to document Tier 1 Supplemental Strategies for behavior</li> <li><input type="checkbox"/> Check for staff and teacher understanding of PBIS - provide "PBIS 101" training as a resource Brainshark available at: <a href="http://www.brainshark.com/browardschools/PBIS101">http://www.brainshark.com/browardschools/PBIS101</a></li> </ul>
October 2 <sup>nd</sup> Quarter Team Meeting	<ul style="list-style-type: none"> <li><input type="checkbox"/> Review previous quarter's data. (Use Tier 1 Agenda and Quarter Big 5 Data template on PBIS Canvas page)</li> <li><input type="checkbox"/> Present implementation data, behavior data, team activities, and SPBP progress to entire staff</li> <li><input type="checkbox"/> Ensure Core Effectiveness Action Steps are being implemented as written</li> <li><input type="checkbox"/> Complete Quarterly Big 5 Data Template and submit to your PBIS Administrator</li> <li><input type="checkbox"/> Confirm next quarterly PBIS team meeting date and time</li> </ul>
November	<ul style="list-style-type: none"> <li><input type="checkbox"/> Review/revise lesson plans as indicated by previous quarter behavior data</li> <li><input type="checkbox"/> Ensure that the Student Outcome Monitoring Action Steps are being implemented as written</li> </ul>
January 3 <sup>rd</sup> Quarter Team Meeting	<ul style="list-style-type: none"> <li><input type="checkbox"/> Staff to re-teach Expectations and Rules after winter break</li> <li><input type="checkbox"/> Review previous quarter's data. (Use Tier 1 Agenda and Quarter Big 5 Data template on PBIS Canvas page)</li> <li><input type="checkbox"/> Present implementation data, behavior data, team activities, and SPBP progress to entire staff</li> <li><input type="checkbox"/> Complete Quarterly Big 5 Data Template and submit to your PBIS Administrator</li> <li><input type="checkbox"/> Confirm next quarterly PBIS team meeting date and time</li> </ul>
February	<ul style="list-style-type: none"> <li><input type="checkbox"/> Check on recently hired staff for PBIS understanding - provide "PBIS 101" Brainshark resource</li> <li><input type="checkbox"/> Utilize the Stakeholder SPBP Forms Survey to solicit input for planning next year's SPBP (optional)</li> </ul>
March 4 <sup>th</sup> Quarter Team Meeting	<ul style="list-style-type: none"> <li><input type="checkbox"/> Ensure progress towards completion and submission of next year's SPBP</li> <li><input type="checkbox"/> Staff to re-teach Expectations and Rules after spring break</li> <li><input type="checkbox"/> Review previous quarter's data. (Use Tier 1 Agenda and Quarter Big 5 Data template on PBIS Canvas page)</li> <li><input type="checkbox"/> Present implementation data, behavior data, team activities, and SPBP progress to entire staff</li> <li><input type="checkbox"/> Complete Quarterly Big 5 Data Template and submit to your PBIS Administrator</li> </ul>
April	<ul style="list-style-type: none"> <li><input type="checkbox"/> Provide staff presentation and faculty vote on new SPBP for next year</li> <li><input type="checkbox"/> Submit your SPBP in BCPS Central by April 30<sup>th</sup>. Use this new SPBP in the next school year</li> <li><input type="checkbox"/> Continue implementing your current SPBP through the end of the current school year</li> </ul>

## CRITICAL ELEMENT # 10: Evaluation

**10A. Staff** Implementation of the Schoolwide Positive Behavior Plan: review goals, evaluate implementation, and create 2 action steps to review in quarterly PBIS meetings.

*“Are staff implementing the SPBP with fidelity? If not, how will you address this area?”*

STAFF Implementation Monitoring		
Staff Implementation Goal	Quarterly Team Review: Implemented with fidelity?	If you answered <b>No</b> , enter 2 action steps your school will take to move towards this goal by the next PBIS meeting.
100% of hallways, front office, cafeteria, and other public areas all have school-wide expectations and location-specific rules posted.	<input type="checkbox"/> Yes <input type="checkbox"/> No	By Click here to enter a date, 1. 2.
100% of instructional staff has delivered expectations and rules lesson plans as written and when indicated.	<input type="checkbox"/> Yes <input type="checkbox"/> No	By Click here to enter a date, 1. 2.
100% of staff members are oriented to the Discipline Flow Chart. It is used consistently by 100% instructional staff, behavioral support, and administrators.	<input type="checkbox"/> Yes <input type="checkbox"/> No	By Click here to enter a date, 1. 2.
A recognition system is implemented by 100% staff for <i>all</i> students.	<input type="checkbox"/> Yes <input type="checkbox"/> No	By Click here to enter a date, 1. 2.



**10B.** The SPBP is successful in positively impacting **students**: review behavior data and create a SMART goal. Evaluate implementation and create action steps to review in quarterly PBIS meeting.

*“If staff are implementing the SPBP consistently and effectively, is it positively impacting students? How will you know?”*

### SMART Criteria:

S	Specific	Concrete, detailed, focused, and well defined. Results-focused and action-orientated.
M	Measurable	The measurement sources (data) are defined numerically in order to track progress towards the objective.
A	Attainable	Objectives are achievable in the near future to maintain motivation.
R	Realistic	Staff have the resources to achieve the objective- time, personnel, materials, etc.
T	Time-bound	Agreed-on time frames create the necessary urgency and prompt action.

STUDENT Outcome Monitoring		
Student Outcome Data	Complete the SMART goal to determine “successful” student outcomes ( <i>use numerical data</i> )	List 2 action steps your team will take to ensure this goal is monitored and meets or exceeds the SMART goal.
<b>Overall ODRs</b>	By June 3, 2026, office discipline referrals will show a decrease of 25% as measured by Office Discipline Referrals (ODRs) in Focus.	1. The team will meet quarterly to review data and make adjustments accordingly. 2. Students with more than three referrals will be brought to the CPST team.

SPBP Submission
<ol style="list-style-type: none"> <li>1. Upload completed SPBP (as PDF) into BCPS Central in the School Improvement Plan. </li> <li>2. Complete PBIS Point of Contact form. </li> </ol>