



**Schoolwide Positive Behavior Plan (SPBP)**  
Broward County Public Schools



**SY 2025 – 2026**

<b>School Name:</b>	Dillard Elementary
<b>School Number:</b>	0271

Please refer to the SPBP Canvas Resource page to access video tutorials, guidance, and resources for completing the 2025-2026 SPBP template.

**CRITICAL ELEMENT # 1: Active Team with Administrative Participation**

**1A. Integrated MTSS School-Leadership Team Members**

Title	First and Last Name	Title	First and Last Name
1. Administrator	Lavina Robinson	7. Security Specialist/ Campus Monitor	Maquis McEady
2. Point of Contact	Briana Ashley	8. Social Worker	Shelisa Pinnock
3. BTU Representative	Ivanio Campbell	9. ESE Facilitator	Kalillah Christie
4. Parent/Community Representative	Tiffany Harswell	10. Support Staff	Nyree Kelly
5. Teacher	Ketria Lofton		
6. School Counselor	Arianna Perez		

\*Optional Team Member(s): Family Therapist, Grade Level/Content Area Representatives, Clerical, Custodial, Food/Nutrition

**1B. Schedule of quarterly team meetings.**

Meeting Objectives:

1. Progress monitor the action steps indicated in Critical Element #9.
2. Collect & analyze student outcome data using the 4 Step Problem Solving Process.

Quarter	PBIS Data Meeting Dates	PBIS Data Meeting Times		Faculty and Staff Data Communication/Presentation Dates
1 <sup>st</sup>	8/6/2025	2:15pm		8/7/2025
2 <sup>nd</sup>	10/27/2025	2:15pm		10/28/2025
3 <sup>rd</sup>	1/12/2026	2:15pm		1/13/2026
4 <sup>th</sup>	4/13/2026	2:15pm		4/14/2026

**CRITICAL ELEMENT # 2: Faculty & Stakeholder Commitment**

**2. Team communication/presentation of new SPBP to staff and stakeholders**

Action Steps:	Dates
Present the 2025-26 SPBP to staff ( <i>prior to April 30, 2025</i> )	4/11/2025
Hold a <i>faculty</i> vote on the new SPBP ( <i>prior to April 30, 2025</i> )	4/14/2025
Provide training to faculty and staff ( <i>prior to September 30, 2025</i> )	8/6/2025
Present the 2025-26 SPBP to family and community stakeholders ( <i>prior to September 30, 2025</i> )	9/9/2025

## CRITICAL ELEMENT # 3: Data Collection and Analysis

### 3A. Core Effectiveness: Use current 2024-2025 school year behavior data as listed in Focus.

- (a) Review your referral data YTD in Focus – Discipline Reports – *Students with Referrals*.
- (b) Complete the yellow highlighted cells.
- (c) Auto-calculate the “% of Total Population” by clicking on each “!Zero Divide” in the cells and pressing “Fn + F9”.
- (d) Determine if the core is effective in all three areas.

TOTAL Population:	611	% of Total Population	Core Effectiveness	
# Referrals:	# of Students:			
I. 0 - 1 referrals	608	!Zero Divide	Are your 0 – 1 referral > 80%?	<input checked="" type="checkbox"/> Yes <input type="checkbox"/> No
II. 2 - 5 referrals (at risk students)	3	!Zero Divide	Are your 2 - 5 referrals <15%?	<input checked="" type="checkbox"/> Yes <input type="checkbox"/> No
III. > 5 referrals (high-risk students)	0	!Zero Divide	Are your >5 referrals <5%?	<input checked="" type="checkbox"/> Yes <input type="checkbox"/> No

### 3B. Core Effectiveness Action Steps:

If you answered “Yes” to I, II, and III above, then your core is effective. Based upon table 8A, is your core effective?	<input type="checkbox"/> Yes <input type="checkbox"/> No
<p>Answer <b>either</b> (a) or (b):</p> <p>(a) If your core is effective, then identify action steps your school leadership team should continue to take for early identification of at risk or high-risk students.</p> <p>(b) If you answered “No” to at least one of the items above (I, II, or III) then indicate the supports and interventions and action steps your school leadership team will implement <i>at the beginning</i> of the next school year to improve core strength:</p> <p>Core Effectiveness Action Steps: <i>(3-4 detailed steps)</i></p> <ol style="list-style-type: none"> <li>1. The team will continue to reinforce school-wide behavior expectations.</li> <li>2. The team will continue with quarterly behavior assemblies.</li> <li>3. The team will continue to monitor the SPBP plan.</li> <li>4. The team will continue to communicate the plan during monthly faculty meetings.</li> </ol>	

**3C.** Disproportionality is often measured with the relative risk statistic calculation (Relative Risk Ratio = RRR), a measure that indicates the probability of a certain event (e.g., referrals) for one subgroup when compared to all other subgroups.

Relative Risk Ratio calculations are coming soon with the Focus Data System migration.

### 3D. Disproportionality Action Steps:

What activities/initiatives/programs will your school leadership team implement to prevent disproportionate discipline outcomes within sub group populations (race, SWD, ELL)?	
<p>Disproportionality Action Steps: <i>(3-4 detailed steps)</i></p> <ol style="list-style-type: none"> <li>1. Quarterly teaching of school rules and expectations for staff and students.</li> <li>2. Monitor the adherence to the student discipline behavior flow-chart.</li> <li>3. Professional development on Teach Like A Champion techniques for all staff during pre-planning week.</li> <li>4.</li> </ol>	

## CRITICAL ELEMENT # 4: Schoolwide Expectations & Location-based Rules

- 4A.** Top five behavior incidents: **Use current 2024-2025 school year behavior data** as listed in Focus.
- (a) Review your referral data YTD in Focus – Discipline – Category Breakdown – *Highest Discipline Code*.
  - (b) Complete the chart by identifying the top five behavior incidents and the number of incidents for each type.
  - (c) Complete the yellow highlighted cells.
  - (d) Auto-calculate the total # of referrals by clicking on “0” and pressing “Fn + F9” together.

Top 5 Behavior Incidents Current Year 2024-2025	# Incidents
1. Unsubstantiated bullying	4
2. Disruptive unruly play	2
3. Weapons Class B possession	2
4. Battery low level	1
5. Fight minor/altercation/confrontation	1
TOTAL	10

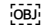
- 4B.** School-wide expectations are 3 – 5 positive characteristics (*not behaviors*) that counteract the top school-wide misbehaviors in section 3A. ALL people on campus are expected to model these expectations.

Schoolwide Expectations
1. Demonstrate Self Control
2. Be Respectful to Others
3. Be Responsible
4. Be an Active Learner
5.

- 4C.** Top three school-wide locations: **Use current 2024-2025 school year behavior data** as listed in Focus.
- (a) Review your referral data YTD in Focus – Discipline – Category Breakdown – *Location*.
  - (b) Complete the chart by identifying the top three schoolwide locations, excluding classroom and the number of incidents for each location.

Top 3 Locations, <b>excluding Classroom:</b>	
School Location(s)	# Incidents
1. Cafeteria/Hallway	3
2. School Grounds	2
3. Bus stop/other	1

**4D. Expectations and Rules Chart for common areas of school campus:**

This chart is posted in all classrooms and used to teach students during behavior lessons. 

<b>Schoolwide Expectations and Location-based Rules</b>				Completed by each teacher:
<b>Schoolwide EXPECTATIONS</b>	<b>Hallway Rules</b>	<b>Cafeteria Rules</b>	<b>School Ground Rules</b>	<b>Classroom Rules</b>
<b>Demonstrate Self Control</b>	Click here to select hallway rules OR <b>Walk on the right side of the hallway in a straight line with your hands behind your back.</b>	Click here to select cafeteria rules OR <b>Keep your hands, feet, and objects to yourself.</b>	Click here to select location rules OR <b>Walking feet</b>	
<b>Be Respectful to Others</b>	Click here to select hallway rules OR <b>Keep hands and feet to yourself.</b>	Click here to select cafeteria rules OR <b>Everyone sit on one side of the table.</b>	Click here to select location rules OR <b>Use inside (level 1) voice.</b>	
<b>Be Responsible</b>	Click here to select hallway rules OR <b>Follow adult directives.</b>	Click here to select cafeteria rules OR <b>Clean your eating space and pick up around your area</b>	Click here to select location rules OR <b>Stay in designated area.</b>	
<b>Be an Active Learner</b>	Click here to select hallway rules OR <b>Listen for the school wide signal.</b>	Click here to select cafeteria rules OR <b>Listen for the school wide signal.</b>	Click here to select location rules OR <b>Listen for the school wide signal.</b>	
Click here to type your Expectation	Click here to select hallway rules OR Click here to type hallway rules.	Click here to select cafeteria rules OR Click here to type cafeteria rules.	Click here to select location rules OR Click here to type location rules.	

## CRITICAL ELEMENT #5: Teaching Behavior

**5A.** At least one lesson plan for **each** schoolwide expectation above is distributed to instructional staff during pre-planning week and are maintained in the SPBP Binder.

Dates when the schoolwide expectations lesson plans are taught by instructional staff and noted in lesson plans:			
	Date(s)	Time:	Location(s):
Start of School Year	8/11/2025	9:00am	Cafeteria
After Winter Break	1/6/2026	9:00am	Cafeteria
After Spring Break	3/23/2026	9:00am	Classroom

**5B.** At least one Rules Lesson Plan for **each** common location is distributed to instructional staff during pre-planning. This is aligned to the **Schoolwide Expectation/Location-based Rules** chart in section 4D. Location-based rules should be taught and reinforced in the context of the location in the beginning of the year, after long breaks, and throughout the year as necessary.

Dates when the rules lesson plans for common locations are taught by instructional staff and noted in lesson plans:			
Common Location	Hallway Rules	Cafeteria Rules	Select location
Lesson Plan Dates			
Start of School Year	8/11/2025	8/11/2025	Classroom
After Winter Break	1/6/2026	1/6/2026	Classroom
After Spring Break	3/23/2026	3/23/2026	Classroom

**5C.** Prevention programs and other schoolwide student support initiatives can be used to proactively teach positive behavior and prosocial skills. Use this chart to plan for how you will use District supported programs and initiatives to promote positive behavior on campus.


Program/Initiative	Plan Details			
	When will it be taught?	Who will teach it?	How will it be implemented? <i>2-3 sentences</i>	How will it be monitored for effectiveness?
<b>Choose Peace/Stop Violence</b>  Click to enter "other"	September	Arianna Perez/Guidance Counselor	Through various student involved activities throughout the week.	Through classroom walkthroughs and observations.
<b>Bullying Prevention: Be the 1</b>  Click to enter "other"	October	Arianna Perez/Guidance Counselor	Bullying prevention will be celebrated weekly during the month of October. Students and staff will engage in activities that promote kindness, acceptance and inclusion.	Through classroom walkthroughs and observations.

## CRITICAL ELEMENT # 6: Recognition Programs

**6A.** The schoolwide recognition system focuses on reinforcing schoolwide expectations OR a specific location where referrals often occur. The recognition should be used to encourage, acknowledge, and reinforce students to exhibit positive behaviors.

Identified Schoolwide Expectation OR Specific Location: [Click here to enter Expectation OR Location](#)

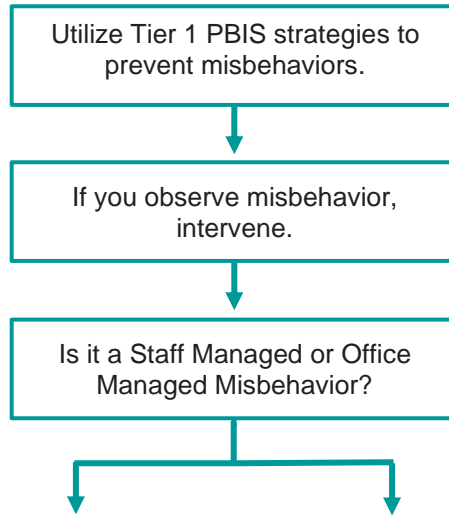
4 Step Problem Solving Process	Plan Details
<p><b>1. Problem Identification:</b> Review your behavior data to identify one school-wide problem. What problem did you identify? <i>(use numerical data)</i></p>	<p><b>Data used:</b> Discipline data was used to determine the school-wide problem.</p> <p><b>Problem Identification Statement:</b> During the 2024-2025 school year, 5 referrals were issued inside of the classroom.</p>
<p><b>2. Problem Analysis:</b> Why do you think this problem is occurring? What is your goal? <i>(create a SMART goal statement with numerical data)</i></p>	<p><b>Hypothesis:</b> The problem is occurring because of the inconsistency of teacher rules and expectations within the classroom.</p> <p><b>SMART Goal Statement:</b> By May 2026, referrals coded in the classroom will decrease by 50%.</p>
<p><b>3. Intervention Design:</b> Describe how you will implement a positive reward program/system to decrease this problem.</p>	<p><b>Type of Program/System:</b> Token system</p> <p><b>Description of Program/System:</b> Dillard Dollars will be distributed to all teachers. When students are caught displaying positive behavior, following school wide rules/classroom rules and expectations they may earn Dillard Dollars. Students will be able to earn Dillard Dollars at the school store.</p>
<p><b>4. Evaluation:</b> A. Implementation fidelity</p>	<p><b>How will you monitor the fidelity (consistency and effectiveness) of the staff's implementation of the reward program/system?</b> The behavior management plan will be monitored through classroom walkthroughs and a decrease in referrals written.</p>
<p>B. Student outcome monitoring <i>(use numerical data)</i></p>	<p><b>How will you know if the reward program/system is positively impacting students? What measurable data will you use to determine "success"?</b> Office referral data will be taken quarterly to determine if the number of referrals are trending up or down. Surveys will also be given quarterly to students and staff to solicit their feedback on the impact the token system has on student behavior. The goal is a 50% decrease in ODRs.</p>

**6B.** *Character Education* is an educational and award program utilized to teach and recognize students who display positive character traits each month. Please refer to the BCPS website for lesson plans, videos and additional resources to support this recognition program at your school. 

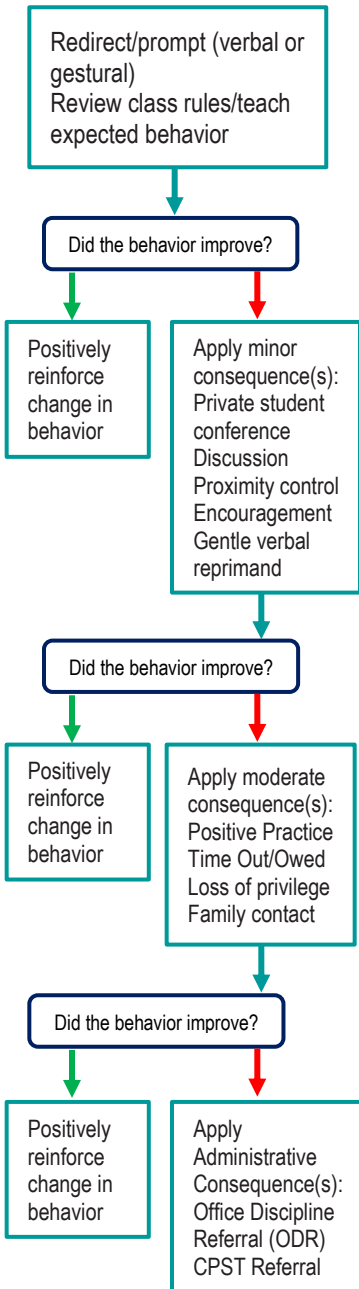
Monthly Character Traits	Plan Details How will you recognize <i>Kids of Character</i> each month? <i>(2-3 sentences)</i>
<ol style="list-style-type: none"> <li>1. September: Cooperation</li> <li>2. October: Responsibility</li> <li>3. November: Citizenship</li> <li>4. December: Kindness</li> <li>5. January: Respect</li> <li>6. February: Honesty</li> <li>7. March: Self-Control</li> <li>8. April: Tolerance</li> </ol>	<p>Students will be rewarded with a certificate and recognized on the morning and afternoon announcements.</p>

# CRITICAL ELEMENT #7: Effective Discipline Procedures

You can choose to use the flow chart below or create your own. This flow chart is posted in all classrooms and used to teach students during behavior lessons.



- Tier 1 Strategies include, but are not limited to:
- Effective classroom structure
  - Precorrection
  - Preferential seating/seat change
  - Remove distractions
  - Personal schedule/organization
  - Reteach expectations and rules
  - Redirection
  - Prompts, cues, and reminders
  - Think time/cool down area
  - Consistent reward system
  - Modify academic assignments
  - Provide choices



Staff Managed Misbehaviors	Office Managed Misbehaviors
Note: The behaviors provided are examples, not an exhausted list of misbehaviors.	
<b>Inappropriate language</b> <ul style="list-style-type: none"> <li>name calling</li> <li>use of profanity</li> </ul>	<b>Inappropriate language</b> <ul style="list-style-type: none"> <li>racial slurs or taunting</li> <li>profanity directed at a staff member</li> </ul>
<b>Disrespect</b> <ul style="list-style-type: none"> <li>talking back</li> <li>physical gestures</li> </ul>	<b>Harassment</b> <ul style="list-style-type: none"> <li>bullying</li> <li>threat or intimidation</li> </ul>
<b>Defiance</b> <ul style="list-style-type: none"> <li>work refusal</li> <li>head down on desk/sleeping</li> <li>not following directions</li> </ul>	<b>Defiance</b> <ul style="list-style-type: none"> <li>leaving classroom, assigned area, or school grounds without permission</li> <li>forgery/plagiarism</li> </ul>
<b>Disruptive</b> <ul style="list-style-type: none"> <li>tattling/false information</li> <li>talking out of turn</li> <li>calling out distracting others</li> </ul>	<b>Disruptive</b> <ul style="list-style-type: none"> <li>inciting others to disrupt teacher</li> <li>chronic classroom disruption: more than 3 times within 30 minutes</li> </ul>
<b>Physical Contact</b> <ul style="list-style-type: none"> <li>touching others, pushing/shoving (no injuries)</li> <li>mutual horseplay</li> </ul>	<b>Physical Contact</b> <ul style="list-style-type: none"> <li>touching others (hitting, kicking, biting) with intent to do harm</li> <li>petty theft</li> </ul>
<b>Violation of classroom or location-specific rules</b>	<b>Violation of the Code of Student Conduct</b>

**Staff:**  
Submit an office discipline referral (ODR) using report style writing (non-judgmental, observable, and measurable language)

**Administrator:**  
Review, investigate and apply consequence according to policy  
Contact family to communicate incident and consequence  
Follow up with teacher/feedback/support




**Crisis Events:**  
In need of immediate assistance  
Potentially unsafe environment  
Suspicion of criminal behavior  
Contact front office/administration immediately  
Follow safety team protocol

## CRITICAL ELEMENT # 8: Classroom Management Systems

### 8A. Evidence-based Tier 1 classroom management system:

Which evidence-based system(s) are you using?	Provide 3-4 measurable and observable action steps the team will take to help educators improve their classroom management system. <i>(3-4 detailed steps)</i>
<input type="checkbox"/> CHAMPS <input checked="" type="checkbox"/> Positive Behavior Interventions and Supports and the Classroom <a href="https://fl-pda.org/#/category/26">https://fl-pda.org/#/category/26</a> <input type="checkbox"/> Other: Click here to enter name of system.	<ol style="list-style-type: none"> <li>1. The team will coordinate behavior management training for all faculty and staff during preplanning week.</li> <li>2. The team will coordinate follow-up with training in January 2026 after Winter Break.</li> <li>3. Model the school-wide expectations</li> <li>4. Review the behavior dashboard quarterly with faculty/staff and discuss the importance of classroom rules and procedures.</li> </ol>

### 8B. The administration reviews and analyzes the fidelity of staff implementation of Tier 1 classroom management systems **across teachers** using:

<input type="checkbox"/> CHAMPs 7 Up Checklist 
<input type="checkbox"/> Classroom Snapshot (Classroom Management Assessment) 
<input type="checkbox"/> PBIS Classroom Assistance Tool (CAT) 
<input checked="" type="checkbox"/> Other ( <i>specify</i> ): Behavior Walkthrough Tool

### 8C. Percentage of classroom referrals: **Use current 2024-2025 school year behavior data** as listed in Focus.

(a) Review your classroom data YTD in Focus – Discipline – Category Breakdown – Location.

(b) Complete the yellow highlighted cells.

(c) Auto-calculate the % of referrals in the classroom by clicking on “!Zero Divide” in the next cell and pressing “Fn + F9” together.

Total number of discipline referrals <b>from classrooms</b> :	5
Total number of <i>other</i> <b>school-wide</b> discipline referrals (not including classrooms):	10
% of referrals in the classroom:	33%
Do more than 40% of your referrals come from the classroom?	<input checked="" type="checkbox"/> Yes <input type="checkbox"/> No

***If >40% of discipline referrals come from the classroom, it suggests Tier 1 classroom management implementation may need to be strengthened school wide.***

## Critical Elements # 9: SPBP Implementation Planning

RED Font = Action Steps for all schools in Broward County

GREY Font = Best Practices for all schools in Broward County

TEAL Font = Resources available at <https://browardschools.instructure.com/enroll/PWF673>

Implementation Action Plan	
Month	Action Steps
	<input checked="" type="checkbox"/> check off Action Step when completed
Current	<ul style="list-style-type: none"> <li><input type="checkbox"/> Create an SPBP binder or portfolio to retain (for 2 years) hard copies of: your SPBPs, Action Plans, staff PBIS professional development attendance, stakeholder training attendance, quarterly meeting agendas, quarterly staff behavior presentations, voting attendance and outcome, Expectations lesson plans and Rules lesson plans</li> </ul>
Pre-Planning	<ul style="list-style-type: none"> <li><input type="checkbox"/> Print up your SPBP and Feedback form BCPS Central</li> <li><input type="checkbox"/> Provide SPBP presentation to all staff during Pre-Planning</li> <li><input type="checkbox"/> Disseminate the current SPBP (hard copy or electronically) to all staff and stakeholders</li> <li><input type="checkbox"/> Market and post School-wide Expectations and Location-specific Rules</li> <li><input type="checkbox"/> Identify your district PBIS Specialist (Contact <a href="mailto:amber.jennings@browardschools.com">amber.jennings@browardschools.com</a> for more information if you are unsure)</li> <li><input type="checkbox"/> Ensure schedule of quarterly meeting dates for entire year as indicated in the SPBP (indicated in yellow)</li> </ul>
August 1 <sup>st</sup> Quarter Team Meeting	<ul style="list-style-type: none"> <li><input type="checkbox"/> Determine any needed team training, such as: 4 Step Problem Solving Process series, PBIS 10 Critical Elements, Data Collection, etc.</li> <li><input type="checkbox"/> Review previous year's SPBP and feedback form; make necessary modifications</li> <li><input type="checkbox"/> Review previous year's data (Use Tier 1 Agenda and Quarter Big 5 Data template on PBIS Canvas page)</li> <li><input type="checkbox"/> Verify and implement teaching schedule for Expectations and Rules behavior lesson plans</li> <li><input type="checkbox"/> Implement the Reward System for all students as indicated in the SPBP</li> <li><input type="checkbox"/> Ensure the Discipline Flow Chart is distributed to all staff and is being used as written</li> <li><input type="checkbox"/> Present implementation data, behavior data, team activities and SPBP progress to entire staff</li> <li><input type="checkbox"/> Ensure all teachers are using an evidence-based classroom management plan, such as CHAMPS</li> <li><input type="checkbox"/> Confirm next quarterly PBIS team meeting date and time</li> </ul>
September	<ul style="list-style-type: none"> <li><input type="checkbox"/> Provide SPBP stakeholder presentation by September 30<sup>th</sup></li> <li><input type="checkbox"/> Ensure instructional staff know how to document Tier 1 Supplemental Strategies for behavior</li> <li><input type="checkbox"/> Check for staff and teacher understanding of PBIS - provide "PBIS 101" training as a resource Brainshark available at: <a href="http://www.brainshark.com/browardschools/PBIS101">http://www.brainshark.com/browardschools/PBIS101</a></li> </ul>
October 2 <sup>nd</sup> Quarter Team Meeting	<ul style="list-style-type: none"> <li><input type="checkbox"/> Review previous quarter's data. (Use Tier 1 Agenda and Quarter Big 5 Data template on PBIS Canvas page)</li> <li><input type="checkbox"/> Present implementation data, behavior data, team activities, and SPBP progress to entire staff</li> <li><input type="checkbox"/> Ensure Core Effectiveness Action Steps are being implemented as written</li> <li><input type="checkbox"/> Complete Quarterly Big 5 Data Template and submit to your PBIS Administrator</li> <li><input type="checkbox"/> Confirm next quarterly PBIS team meeting date and time</li> </ul>
November	<ul style="list-style-type: none"> <li><input type="checkbox"/> Review/revise lesson plans as indicated by previous quarter behavior data</li> <li><input type="checkbox"/> Ensure that the Student Outcome Monitoring Action Steps are being implemented as written</li> </ul>
January 3 <sup>rd</sup> Quarter Team Meeting	<ul style="list-style-type: none"> <li><input type="checkbox"/> Staff to re-teach Expectations and Rules after winter break</li> <li><input type="checkbox"/> Review previous quarter's data. (Use Tier 1 Agenda and Quarter Big 5 Data template on PBIS Canvas page)</li> <li><input type="checkbox"/> Present implementation data, behavior data, team activities, and SPBP progress to entire staff</li> <li><input type="checkbox"/> Complete Quarterly Big 5 Data Template and submit to your PBIS Administrator</li> <li><input type="checkbox"/> Confirm next quarterly PBIS team meeting date and time</li> </ul>
February	<ul style="list-style-type: none"> <li><input type="checkbox"/> Check on recently hired staff for PBIS understanding - provide "PBIS 101" Brainshark resource</li> <li><input type="checkbox"/> Utilize the Stakeholder SPBP Forms Survey to solicit input for planning next year's SPBP (optional)</li> </ul>
March 4 <sup>th</sup> Quarter Team Meeting	<ul style="list-style-type: none"> <li><input type="checkbox"/> Ensure progress towards completion and submission of next year's SPBP</li> <li><input type="checkbox"/> Staff to re-teach Expectations and Rules after spring break</li> <li><input type="checkbox"/> Review previous quarter's data. (Use Tier 1 Agenda and Quarter Big 5 Data template on PBIS Canvas page)</li> <li><input type="checkbox"/> Present implementation data, behavior data, team activities, and SPBP progress to entire staff</li> <li><input type="checkbox"/> Complete Quarterly Big 5 Data Template and submit to your PBIS Administrator</li> </ul>
April	<ul style="list-style-type: none"> <li><input type="checkbox"/> Provide staff presentation and faculty vote on new SPBP for next year</li> <li><input type="checkbox"/> Submit your SPBP in BCPS Central by April 30<sup>th</sup>. Use this new SPBP in the next school year</li> <li><input type="checkbox"/> Continue implementing your current SPBP through the end of the current school year</li> </ul>

## CRITICAL ELEMENT # 10: Evaluation

**10A. Staff** Implementation of the Schoolwide Positive Behavior Plan: review goals, evaluate implementation, and create 2 action steps to review in quarterly PBIS meetings.

*“Are staff implementing the SPBP with fidelity? If not, how will you address this area?”*

STAFF Implementation Monitoring		
Staff Implementation Goal	Quarterly Team Review: Implemented with fidelity?	If you answered <b>No</b> , enter 2 action steps your school will take to move towards this goal by the next PBIS meeting.
100% of hallways, front office, cafeteria, and other public areas all have school-wide expectations and location-specific rules posted.	<input type="checkbox"/> Yes <input type="checkbox"/> No	By Click here to enter a date, 1. 2.
100% of instructional staff has delivered expectations and rules lesson plans as written and when indicated.	<input type="checkbox"/> Yes <input type="checkbox"/> No	By Click here to enter a date, 1. 2.
100% of staff members are oriented to the Discipline Flow Chart. It is used consistently by 100% instructional staff, behavioral support, and administrators.	<input type="checkbox"/> Yes <input type="checkbox"/> No	By Click here to enter a date, 1. 2.
A recognition system is implemented by 100% staff for <i>all</i> students.	<input type="checkbox"/> Yes <input type="checkbox"/> No	By Click here to enter a date, 1. 2.

**10B.** The SPBP is successful in positively impacting **students**: review behavior data and create a SMART goal. Evaluate implementation and create action steps to review in quarterly PBIS meeting.


*“If staff are implementing the SPBP consistently and effectively, is it positively impacting **students**? How will you know?”*

**SMART Criteria:**

S	Specific	Concrete, detailed, focused, and well defined. Results-focused and action-orientated.
M	Measurable	The measurement sources (data) are defined numerically in order to track progress towards the objective.
A	Attainable	Objectives are achievable in the near future to maintain motivation.
R	Realistic	Staff have the resources to achieve the objective- time, personnel, materials, etc.
T	Time-bound	Agreed-on time frames create the necessary urgency and prompt action.

STUDENT Outcome Monitoring		
Student Outcome Data	Complete the SMART goal to determine “successful” student outcomes <i>(use numerical data)</i>	List 2 action steps your team will take to ensure this goal is monitored and meets or exceeds the SMART goal.
<b>Select an item</b> <i>Choose one ODR area of focus</i>	By June 3, 2026, click here to enter area of focus <i>[identify one area of focus]</i> will indicate click here to enter # <i>[increased or decreased number or percentage]</i> as measured by Office Discipline Referrals (ODRs) in Focus.	1. 2.

**SPBP Submission**

1. Upload completed SPBP (as PDF) into BCPS Central in the School Improvement Plan. 
2. Complete PBIS Point of Contact form. 