

SOUTH PLANTATION HIGH SCHOOL EST. 1971

# MISSION-VISION-VALUES

## MISSION

*"To inspire and develop all Paladins through positive relationships and meaningful high-quality instruction to reach their highest potential"*

## VISION

"Be your best self, be South"

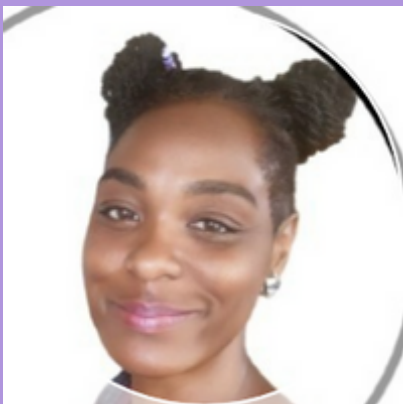
## VALUES

**The Paladin Way is R.I.C.H.**  
Relationship Focused  
Inclusive Environment  
Character Development  
High Expectations



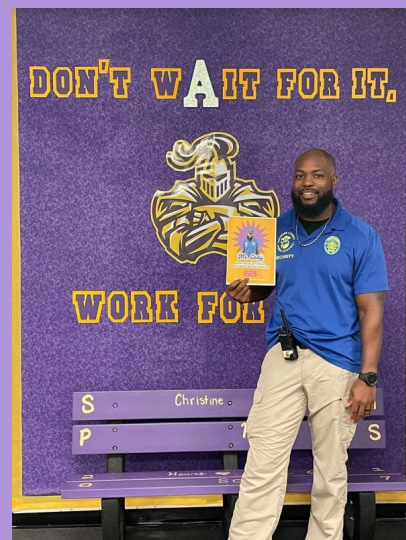
# CONGRATULATIONS PALADINS!!

Instructional  
Employee of the Month



**Kenia Brown**  
English

Non-Instructional  
Employee of the Month



**James Cody, Security**